

SURVEY & REMONUMENTATION

APR 27 1995

LIBER 003 PAGE 600

COMMISSION

LAND CORNER RECORDATION CERTIFICATE
Filing Requirement of Act 74, Mich. P.A. 1970

For corners in
Grand Traverse

(County)

Located In:

Corner Code #

- | | | |
|------------------------------------|---------------------------|------------|
| 1. Public Land Survey | T <u>27N</u> R <u>11W</u> | <u>E-3</u> |
| | T _____ R _____ | _____ |
| | T _____ R _____ | _____ |
| | T _____ R _____ | _____ |
| 2. Property Controlling in Section | S _____ T _____ R _____ | _____ |
| | S _____ T _____ R _____ | _____ |
| 3. Miscellaneous Property in Sec. | S _____ T _____ R _____ | _____ |
| | S _____ T _____ R _____ | _____ |

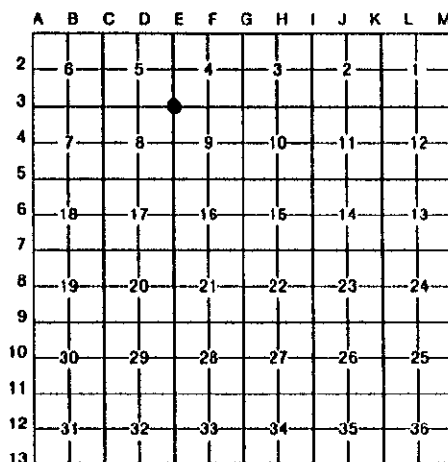
STATE OF MICHIGAN
GRAND TRAVERSE COUNTY
RECORDED

30 DEC 94 1:37 P.M.

KARON ANDERSON
REGISTER OF DEEDS

Register of Deeds Stamp & File Number

4. Lot No. _____, Recorded Plat _____
5. Private Claims _____



I, Garth D. Stowe, in a field survey on July 7, 19 94, do hereby certify that under requirements of P.A. 74, Michigan P.A. of 1970, the corner points mentioned in lines 1 and 2 above were in conformance with regulations and rules therefore as required in the current manual of survey instructions of the United States Department of the Interior, Bureau of Land Management or by a decree of a Court of Law and/or that the corner points mentioned in lines 3, 4 and 5 above were in conformance with the rules of the Michigan Board of Land Surveyors or by a Decree of a Court of Law; established, re-established, monumented, re-monumented, recovered, found as expressed below:

NOTE: Not more than 4 corners, all in the same town and range, may be recorded on this certificate.

A. Description of original monument and accessories and/or subsequent restoration:

E-3: Original G.L.O. notes and witnesses.
County Surveyors notes of 1906 filed in Liber 2, Pg. 252 and of 1912 filed in Liber 2, Pg. 442.
Grand Traverse County Road Commission found 4" pipe with brass cap, no date listed.
LCR by Gerschbacher filed January 10, 1989 in Liber 2, Page 144.

B. Description of corner evidence found and/or method applied in restoring or reestablishing corner:

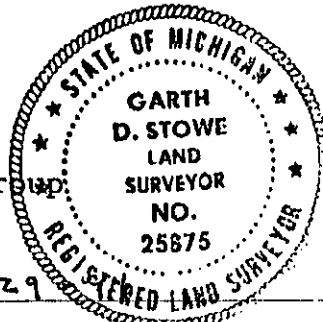
E-3: No physical evidence of original G.L.O. witnesses were found. Found 1-1/2" x 23" iron bar in pavement box 5 feet South of centerline of Cedar Run Road and replaced with a Grand Traverse County monument. This is accepted as a careful and faithful perpetuation of the position of original corner.

UNANIMOUSLY ACCEPTED BY THE GRAND TRAVERSE COUNTY PEER REVIEW GROUP AS THE OFFICIAL CORNER UNDER MICHIGAN PUBLIC ACT 345 OF 1990 AT A MEETING HELD ON 7-13-94
Robert F. Mitchell
ROBERT F. MITCHELL, P.S., CHAIRMAN

C. Description of monument for corner and accessories established to perpetuate locating the position of the corner:

E-3: Corner common to Sections 4, 5, 8 & 9, T.27N., R.11W.
Perpetuated with 2-1/2" x 30" flanged bottom galvanized iron pipe with 3-1/4" brass cap stamped GRAND TRAVERSE COUNTY REMONUMENTATION.
N12°E 53.71' 10" Cedar
N71°W 167.91' Telephone Pole
S12°W 35.43' 14" Maple
S89°W 198.00' Power Pole

Corner approved by the Grand Traverse County Peer Review Group on 7-13-94.



Signed by Garth D. Stowe Date 12-29
Surveyor's Michigan License No. 25875