

SURVEY & REMONUMENTATION

LIBER **003** PAGE **602**

APR 27 1995

LAND CORNER RECORDATION CERTIFICATE
Filing Requirement of Act 74, Mich. P.A. 1970

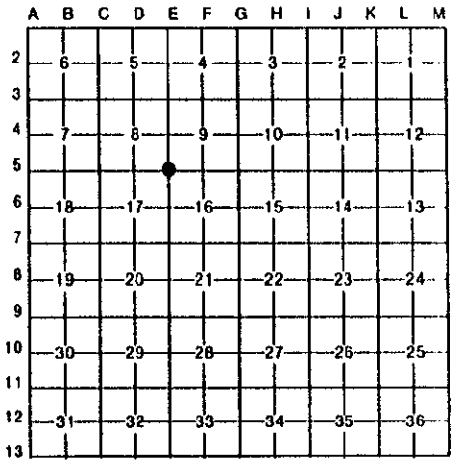
COMMISSION

For corners in **Grand Traverse**

(County)	Located In:	Corner Code #:
1. Public Land Survey	T <u>27N</u> R <u>11W</u>	<u>E-5</u>
	T _____ R _____	_____
	T _____ R _____	_____
	T _____ R _____	_____
2. Property Controlling in Section	S _____ T _____ R _____	_____
	S _____ T _____ R _____	_____
3. Miscellaneous Property in Sec.	S _____ T _____ R _____	_____
	S _____ T _____ R _____	_____
4. Lot No. _____, Recorded Plat _____		
5. Private Claims _____		

STATE OF MICHIGAN
 GRAND TRAVERSE COUNTY
 RECORDED
 30 DEC 94 1:36 P.M.
 KARON ANDERSON
 REGISTER OF DEEDS
 Register of Deeds Stamp & File Number

I, Garth D. Stowe, in a field survey on July 7, 1994, do hereby certify that under requirements of P.A. 74, Michigan P.A. of 1970, the corner points mentioned in lines 1 and 2 above were in conformance with regulations and rules therefore as required in the current manual of survey instructions of the United States Department of the Interior, Bureau of Land Management or by a decree of a Court of Law and/or that the corner points mentioned in lines 3, 4 and 5 above were in conformance with the rules of the Michigan Board of Land Surveyors or by a Decree of a Court of Law; established, re-established, monumented, re-monumented, recovered, found as expressed below:



NOTE: Not more than 4 corners, all in the same town and range, may be recorded on this certificate.

A. Description of original monument and accessories and/or subsequent restoration:

E-5: Original G.L.O. notes and witnesses.
 County Surveyors notes of 1900 filed in Liber 2, Pg. 20.
 Fred Soll, R.L.S., found iron in 1930 survey for State Hospital.
 LCR by Gerschbacher, July 31, 1972, recorded in Liber 1, Page 320.

UNANIMOUSLY ACCEPTED BY THE GRAND TRAVERSE COUNTY PEER REVIEW GROUP AS THE OFFICIAL CORNER UNDER MICHIGAN PUBLIC ACT 345 OF 1990 AT A MEETING HELD ON 7-13-94
 ROBERT F. MITCHELL, P.S., C.T.A.H.M.I.

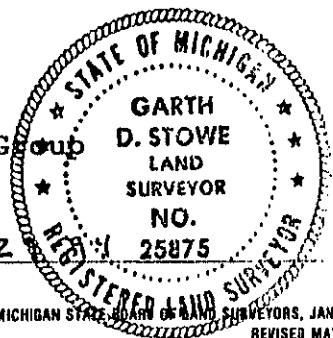
B. Description of corner evidence found and/or method applied in restoring or reestablishing corner:

E-5: No physical evidence of original G.L.O. witnesses were found.
 Found 5/8" x 1 ft. boat spike over a 1/2" x 18" re-rod with cap #25875 over a 1-1/4" x 2 ft. iron pipe over something found with a locator past 5 feet deep, quit digging, 13 feet East of Slusher Road and replaced with a Grand Traverse County monument over the re-rod & pipe. This is accepted as a careful and faithful perpetuation of the position of the original corner.

C. Description of monument for corner and accessories established to perpetuate locating the position of the corner:

E-5: Corner common to Sections 8, 9, 16 & 17, T.27N., R.11W.
 Perpetuated with 2-1/2" x 30" flanged bottom galvanized iron pipe with 3-1/4" brass cap stamped GRAND TRAVERSE COUNTY REMONUMENTATION.
 East 16.90' Top of flange plate of steel tank
 S40°W 55.95' "X" in West end of 15" CMP
 South 171.71' 20" Maple
 N11°E 171.12' 14" Maple

Corner approved by the Grand Traverse County Peer Review Group on 7-13-94.



Signed by Garth D. Stowe 25875 Date 12-2
 Surveyor's Michigan License No. _____