

3 MAY 17 1997
COMMISSION

LIBER 003 724

960024

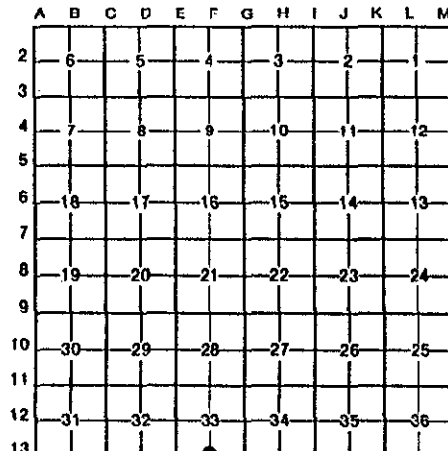
LAND CORNER RECORDATION CERTIFICATE
Filing Requirement of Act 74, Mich. P.A. 1970

For corners in
Grand Traverse

	Located In:	Corner Code #
	27N 11W	F-13
1. Public Land Survey	T _____ R _____	_____
	T _____ R _____	_____
	T _____ R _____	_____
	T _____ R _____	_____
2. Property Controlling in Section	S _____ T _____ R _____	_____
	S _____ T _____ R _____	_____
3. Miscellaneous Property in Sec.	S _____ T _____ R _____	_____
	S _____ T _____ R _____	_____
4. Lot No. _____, Recorded Plat _____		
5. Private Claims _____		

STATE OF MICHIGAN
GRAND TRAVERSE COUNTY
RECORDED
27 DEC 96 2:35 P.M.
KARON ANDERSON
Register of Deeds

I, Garth D. Stowe in a field survey on October, 1996, do hereby certify that under requirements of P.A. 74, Michigan P.A. of 1970, the corner points mentioned in lines 1 and 2 above were in conformance with regulations and rules therefore as required in the current manual of survey instructions of the United States Department of the Interior, Bureau of Land Management or by a decree of a Court of Law and/or that the corner points mentioned in lines 3, 4 and 5 above were in conformance with the rules of the Michigan Board of Land Surveyors or by a Decree of a Court of Law; established, re-established, monumented, re-monumented, recovered, found as expressed below:



NOTE: Not more than 4 corners, all in the same town and range, may be recorded on this certificate.

A. Description of original monument and accessories and/or subsequent restoration:

F-13: U.S. Government Survey by Burt in 1839. Set post witnessed by Beech 20" N63°W 24 lks, Beech 12" N63°E 36 lks. In April 1961, R.L.S. Downey, working for Michigan Dept. of Transportation, sets bronze marker on North-South fence line and files corner with Grand Traverse County Road Commission. Certificates of Survey by: Perla in 1972; Wilcox in 1980; Batzer in 1980. Land Corner Record filed by DeLaMater in 1988 at Grand Traverse County Register of Deeds.

B. Description of corner evidence found and/or method applied in restoring or reestablishing corner:

F-13: Found 1/2" rod in monument box in centerline of Rennie School Road with accessories listed in Section A. Monument box with iron found 19.4 feet West, as set by Batzer in 1978. Corner accepted as a careful perpetuation of a locally accepted corner as monumented by R.L.S. Downey.

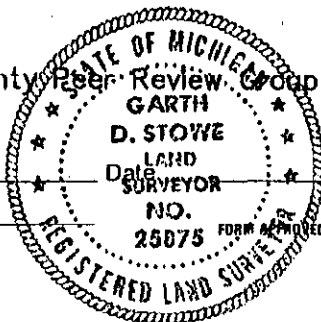
UNANIMOUSLY ACCEPTED BY THE
GRAND TRAVERSE COUNTY PEER
REVIEW GROUP AS THE OFFICIAL
CORNER UNDER MICHIGAN PUBLIC
ACT 345 OF 1990 AT A MEETING
HELD ON 11-05-96
Robert F. Mitchell
ROBERT F. MITCHELL, P.S., Chairman

C. Description of monument for corner and accessories established to perpetuate locating the position of the corner:

F-13: South 1/4 Corner, Section 33, T27N, R11W
Set monument box with 2-1/2" x 30" flanged bottom galvanized pipe with 3-1/4" brass cap stamped GRAND TRAVERSE COUNTY REMONUMENTATION in centerline of Rennie School Road.
N27°W 40.64' Power Pole S32°E 92.95' Face of Well
S01°W 28.43' 8" Poplar West 19.4' Monument Box w/Iron
S57°W 87.90' 6" Elm
N20°E 57.36' 7" Ironwood

Corner approved by the Grand Traverse County Peer Review Group on November 5, 1996.

Signed by Garth D. Stowe
Surveyor's Michigan License No. 25875



12-16-96