

SURVEY & REMONUMENTATION

APR 27 1995

LIBER 003 PAGE 590

COMMISSION

LAND CORNER RECORDATION CERTIFICATE
Filing Requirement of Act 74, Mich. P.A. 1970

For corners in
Grand Traverse
(County)

Located In: Corner Code =#

- | | | |
|---------------------------------------|---------------------------|------------|
| 1. Public Land Survey | T <u>29N</u> R <u>10W</u> | <u>G-7</u> |
| | T _____ R _____ | _____ |
| | T _____ R _____ | _____ |
| | T _____ R _____ | _____ |
| 2. Property Controlling in Section | S _____ T _____ R _____ | _____ |
| | S _____ T _____ R _____ | _____ |
| 3. Miscellaneous Property in Sec. | S _____ T _____ R _____ | _____ |
| | S _____ T _____ R _____ | _____ |
| 4. Lot No. _____, Recorded Plat _____ | | |
| 5. Private Claims _____ | | |

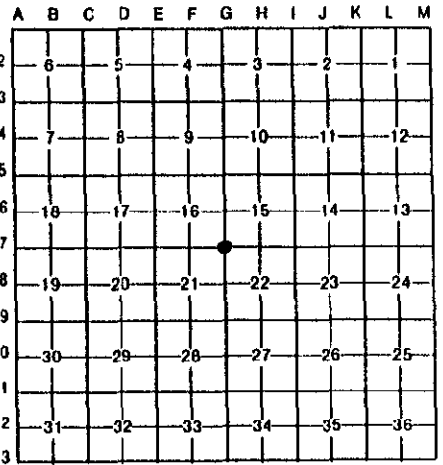
STATE OF MICHIGAN
GRAND TRAVERSE COUNTY
RECORDED

30 DEC 94 1:35 P.M.

KARON ANDERSON
REGISTER OF DEEDS

Register of Deeds Stamp & File Number

I, Garth D. Stowe, in a field survey on October 13, 19 94, do hereby certify that under requirements of P.A. 74, Michigan P.A. of 1970, the corner points mentioned in lines 1 and 2 above were in conformance with regulations and rules therefore as required in the current manual of survey instructions of the United States Department of the Interior, Bureau of Land Management or by a decree of a Court of Law and/or that the corner points mentioned in lines 3, 4 and 5 above were in conformance with the rules of the Michigan Board of Land Surveyors or by a Decree of a Court of Law; established, re-established, monumented, re-monumented, recovered, found as expressed below:



NOTE: Not more than 4 corners, all in the same town and range, may be recorded on this certificate.

A. Description of original monument and accessories and/or subsequent restoration:

G-7: Section corner common to Sections 15, 16, 21 and 22, T.29N., R.10W. Original G.L.O. notes and witnesses. County Surveyor records of 1913 filed in Liber 2, Pg. 466 and of 1930 filed in Liber 8, Pg. 328. Act 74 filed in Liber 1, Pg. 232 and Liber 1, Pg. 811.

B. Description of corner evidence found and/or method applied in restoring or reestablishing corner:

G-7: No physical evidence of original G.L.O. witnesses were found. Found 1-1/2" x 3" iron pipe in monument box in centerline of Seven Hills Road and is accepted as a careful and faithful perpetuation of the position of the original corner.

UNANIMOUSLY ACCEPTED BY THE GRAND TRAVERSE COUNTY PEER REVIEW GROUP AS THE OFFICIAL CORNER UNDER MICHIGAN PUBLIC ACT 345 OF 1990 AT A MEETING HELD ON 10-25-94

Robert F. Mitchell
ROBERT F. MITCHELL, P.S., CI ALHMAN

C. Description of monument for corner and accessories established to perpetuate locating the position of the corner:

G-7: Corner common to Sections 15, 16, 21 & 22, T.29N., R.10W. Perpetuated with 2-1/2" x 30" flanged bottom galvanized iron pipe with 3-1/4" brass cap stamped GRAND TRAVERSE COUNTY REMONUMENTATION.
N48°E 139.65' Power Pole
S14°E 104.21' N.W. corner of conc. block garage
S87°W 213.82' N.E. corner of house
S62°E 114.31' N.W. corner of house

Corner approved by the Grand Traverse County Peer Review Group on 10-25-94.

Signed by Garth D. Stowe 25875 Date 12-29-94
Surveyor's Michigan License No. _____

