

MAY 1 9 1990

LAND CORNER RECORDATION CERTIFICATE

Filing Requirement of Act 74, Mich. P.A. 1970

Barbara Kirt
Leelanau Reg of Deeds
BJK Feet
04B00002 P0156
01/09/97
2:29 PM
9.00
Page 1 of 1

For corners in
Leelanau
(County)

Located in: Corner Code #

- 1. Public Land Survey T 29N R 11W E-2
- T R
- T R
- T R
- 2. Property Controlling S T R
- in Section S T R
- 3. Miscellaneous S T R
- Property in Section S T R

#459

Register of Deeds Stamp & File Number

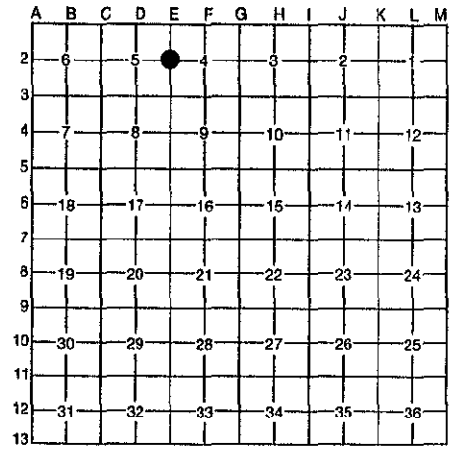
- 4. Lot No. _____, Recorded Plat _____
- 5. Private Claims _____

I, Steven P. Bye, in a field survey on November 4, 1996, do hereby certify that under requirements of P.A. 74, Michigan P.A. of 1970, the corner points mentioned in lines 1 and 2 above were in conformance with regulations and rules therefore as required in the current manual of survey instructions of the United States Department of the Interior, Bureau of Land Management or by a decree of a Court of Law and/or that the corner points mentioned in lines 3, 4 and 5 above were in conformance with the rules of the Michigan Board of Professional Surveyors or by a Decree of a Court of Law; established, re-established, monumented, re-monumented, recovered, found as expressed below:

NOTE: Not more than 4 corners, all in the same town and range, may be recorded on this certificate.

A. Description of original monument and accessories and/or subsequent restoration:

E-2: West 1/4 corner of Section 4
G.L.O. Notes:
"Set 1/4 section post"
Hemlock 18 N50W 24 links
Do. 8 N27E 29 links



APPROVED LAND CORNER
P.A. 345 OF 1990
LEELANAU COUNTY
DATE: 10-23-96
COUNTY REP. N.M.O'Non

B. Description of corner evidence found and/or method applied in restoring or reestablishing corner:

E-2: West 1/4 corner of Section 4
Re-established by N: O'Non prorated to Co. Surveyor Greene (1911) - survey dated December 29, 1987 shows set 1/2" X 24" Rerod with cap #28420. Survey dated January 10, 1990 shows PK nail set over 1/2" iron.
Record witnesses:
10" Cedar, S43°E, 40.45'
11" White Birch, N61°E, 39.30'
11" Hemlock, N63°W, 50.45'
5' East of existing centerline Co. Rd. #633

C. Description of monument for corner and accessories established to perpetuate locating the position of the corner:

E-2: West 1/4 corner of Section 4
1/2" Rerod (with PK nail over top) accepted as a careful and faithful re-establishment of the position of the original corner, by the Leelanau County Remonumentation Peer Review Group, October 23, 1996, and replaced with a 3/4" i.d. galvanized iron pipe 3' long with a brass cap and protective monument box.

Witnesses:
12" Hemlock N63°W 50.45'
12" Birch N61°E 39.30'
12" Cedar S43°E 40.45'
Power Pole S14°W 102.04'



Signed by Steven P. Bye
Surveyor's Michigan License No. 35991

Date 12-26-96