

LAND CORNER RECORDATION CERTIFICATE
Filing Requirement of Act 74, Mich. P.A. 1970

For corners in

<u>Houghton</u> (County)	Located In:	Corner Code #
1. Public Land Survey	T <u>47N.</u> R <u>37 W.</u>	<u>F-9</u>
	T _____ R _____	_____
	T _____ R _____	_____
	T _____ R _____	_____
2. Property Controlling in Section	S _____ T _____ R _____	_____
	S _____ T _____ R _____	_____
3. Miscellaneous Property in Sec.	S _____ T _____ R _____	_____
	S _____ T _____ R _____	_____

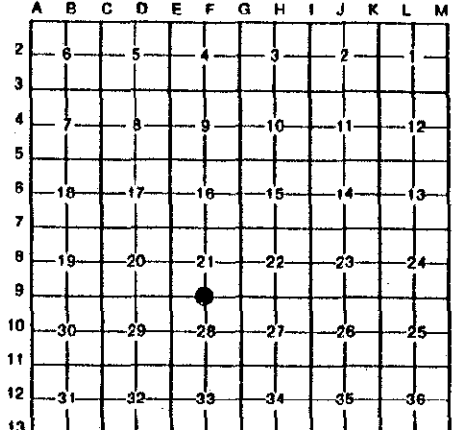
REGISTER'S OFFICE
Houghton County, Mich.
Received for record the 21st day
of October A. D. 1996 at 3:45
o'clock P. M. and recorded in Vol. 3
of Land Corner Records Page 327
W. J. ... Register

Register of Deeds Stamp & File Number

4. Lot No. _____, Recorded Plat _____
5. Private Claims _____

Quarter corner 21 & 28; T.47 N., R.37 W.

I, Richard L. Drahn in a field survey on May 17, 19 95, do hereby certify that under requirements of P.A. 74, Michigan P.A. of 1970, the corner points mentioned in lines 1 and 2 above were in conformance with regulations and rules therefore as required in the current manual of survey instructions of the United States Department of the Interior, Bureau of Land Management or by a decree of a Court of Law and/or that the corner points mentioned in lines 3, 4 and 5 above were in conformance with the rules of the Michigan Board of Land Surveyors or by a Decree of a Court of Law; established re-established, monumented, re-monumented, recovered, found as expressed below:



NOTE: Not more than 4 corners, all in the same town and range, may be recorded on this certificate.

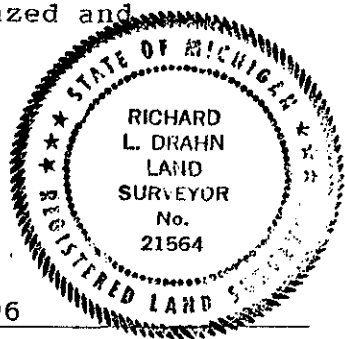
- A. Description of original monument and accessories and/or subsequent restoration:
Original corner established by E.C. Martin, Deputy Surveyor on August 25, 1851. Original bearing trees:
- | | | | | |
|---------|-----|---------|----------|--------------|
| Sugar | 14" | S.53 E. | 19 links | (12.54 feet) |
| Hemlock | 10" | N.75 W. | 11 links | (7.26 feet) |

Corner research record on file with Houghton County. (4/18/95)

- B. Description of corner evidence found and/or method applied in restoring or reestablishing corner:
Restored corner position at record bearing and distance from the remains of the two original bearing trees. The first is a large, shallow depression. The second one is now a 16-24" Hemlock stump, decayed to below ground line. Restored corner position lays 5.16 feet east and 2.40 feet north of my Proportional analysis of the corners position.

MAY 18 1997

- C. Description of monument for corner and accessories established to perpetuate locating the position of the corner:
At the corner position I set a 2 1/2" x 30" long aluminum monument with a 3 1/4" aluminum cap, stamped to read: T.47 N., R.37 W.; 1/4; S-21, S-28; 1995; R.L.S. 21564. From which I established the following new blazed and scribed bearing trees:
- | | | | |
|-----|-------------|---------|------------|
| 8" | Sugar Maple | N.52 W. | 16.52 feet |
| 10" | Sugar Maple | N.10 E. | 5.45 feet |
| 10" | Sugar Maple | S.70 E. | 16.47 feet |
| 6' | Steel rail | S.12 W. | 0.82 feet |



Signed by Richard L. Drahn Date February 26, 1996
Surveyor's Michigan License No. 21564