

LAND CORNER RECORDATION CERTIFICATE
Filing Requirement of Act 74, Mich. P.A. 1970

For corners in

<u>Houghton</u> (County)	Located In:	Corner Code #
1. Public Land Survey	T <u>51N</u> R <u>35W</u>	<u>F7</u>
	T <u>51N</u> R <u>35W</u>	<u>E7</u>
	T _____ R _____	_____
	T _____ R _____	_____
2. Property Controlling in Section	S _____ T _____ R _____	_____
	S _____ T _____ R _____	_____
3. Miscellaneous Property in Sec.	S _____ T _____ R _____	_____
	S _____ T _____ R _____	_____

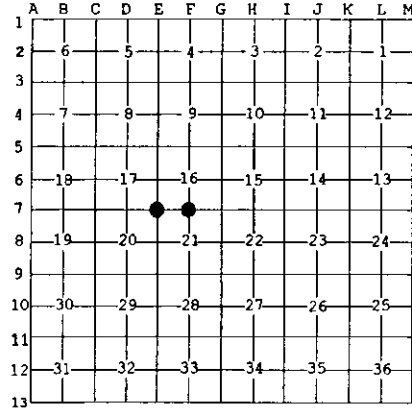
Register of Deeds Stamp & File Number

4. Lot No. _____, Recorded Plat _____
 5. Private Claims _____

Oct 21 1998

I, Stephan J. Szyszkoski, in a field survey on _____, 19____ do hereby state that under requirements of P.A. 74, Michigan P.A. of 1970, the corner points mentioned in lines 1 and 2 above were in conformance with regulations and rules therefore as required in the current manual of survey instructions of the United States Department of the Interior, Bureau of Land Management or by a decree of a Court of Law and/or that the corner points mentioned in lines 3, 4 and 5 above were in conformance with the rules of the Michigan Board of Land Surveyors or by a Decree of a Court of Law, established, re-established, monumented, recovered, found as expressed below.

NOTE: Not more than 2 corners, all in the same town and range, may be recorded on this certificate.



A. Description of original monument and accessories and/or subsequent restoration:
 (F7) Quarter corner common to Sections 16-21. Corner monumented in 1966 by Billy D. Buckler, RLS, from remains of U.S. BT. Recorded again in 1974 by A.O. Enger, RLS: 1" I.D. x 36" iron pipe with 4" aluminum cap. Y. Birch 14 S20W 26.7', Sugar Maple 14 N30E 33.7' (mag. bearings).
 (E7) Corner common to Sections 16-17-20-21. Corner reestablished in 1973 and recorded in 1974 by A.O. Enger, RLS. 1" I.D. x 36" iron pipe with 4" aluminum cap. Sugar Maple 5 N33:30E 12.2', Red Maple 6 S65E 10.2', Cedar 12 S48W 11.6' (bearings magnetic). Found no subsequent record.

B. Description of corner evidence found and/or method applied in restoring or reestablishing corner.

(F7) Recovered the 1966 monument as described, in good condition, at record bearing and distance from the 1974 witness trees, both in good condition with overgrown blazes. Also recovered the original U.S. Yellow Birch B.T., still green, with many old overgrown and exposed blazes, S29W (mag.) 3.5' to estimated notch (S15W 07 links Rec.). Left the monument in place and marked two new witness trees as described below.
 (E7) Recovered the 1973 monument as described, in good condition, and at record bearing and distance from the 1973 maple NBTs, both recovered in good condition with upper and lower blazes overgrown. The 1973 cedar NBT was recovered at record bearing and distance but is dead and down. Left the monument in place and marked 2 new bearing trees as described below.

C. Description of monument for corner and accessories established to perpetuate locating the position of the corner:	(E7) Found 1" pipe with 4" aluminum Michigan Dept. of Conservation cap. Blazed and scribed the following new bearing trees:
(F7) Found 1" pipe with 4" aluminum cap projecting 1.5 feet. Blazed and scribed the following new bearing trees:	8" Twin Y. Birch S84W 35.5' "S20 NBT"
8" Sugar S27E 21.2' "1/4S NBT"	8" R. Maple N71W 36.4' "S17 NBT"
7" Y. Birch N48W 39.2' "1/4S NBT"	Bearings are magnetic. Distances are to notch in lower blaze.
Bearings are magnetic. Distances are to notch in lower blaze.	



Signed by Stephan J. Szyszkoski
 Surveyor's Michigan License No. 33986

Date 8/26/99

For the Michigan Department of Natural Resources - Forest Management Division