

LAND CORNER RECORDATION CERTIFICATE
Filing Requirement of Act 74, Mich. P.A. 1970

For corners in

Houghton
 (County)

Located in: Corner Code #

1. Public Land Survey	T	R	_____
	T	R	_____
	T	R	_____
	T	R	_____
2. Property Controlling in Section	S 8	T 51N R 35W	7
3. Miscellaneous Property in Sec.	S 8	T 51N R 35W	6
	S	T	R
	S	T	R

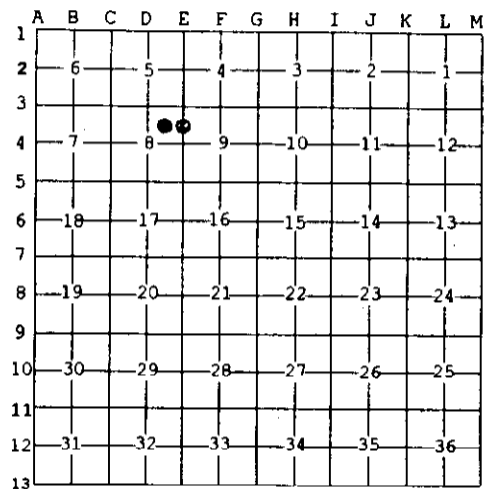
Register of Deeds Stamp & File Number

4. Lot No. _____, Recorded Plat _____
 5. Private Claims _____

Sep 03 2003

I, Stephan J. Szyszkoski, in a field survey on _____, 20____ do hereby state that under requirements of P.A. 74, Michigan P.A. of 1970, the corner points mentioned in lines 1 and 2 above were in conformance with regulations and rules therefore as required in the current manual of survey instructions of the United States Department of the Interior, Bureau of Land Management or by a decree of a Court of Law and /or that the corner points mentioned in lines 3, 4 and 5 above were in conformance with the rules of the Michigan Board of Land Surveyors or by a Decree of a Court of Law; established, re-established, monumented, recovered, found as expressed below:

NOTE: Not more than 2 corners, all in the same town and range, may be recorded on this certificate.



A. Description of original monument and accessories and/or subsequent restoration;
 (7-Sec. 8) North 1/16 corner between Sections 8-9. Not established in the original survey.
 (6-Sec. 8) Northeast 1/16 corner, Section 8. Not established in the original survey.

B. Description of corner evidence found and/or method applied in restoring or reestablishing corner:

(7-Sec. 8) Established the corner midway and on a straight line between Section corner 1320.88' North and Quarter corner 1320.88' South.
 (6-Sec. 8) Established the corner at the intersection of straight lines connecting opposite 1/16 corners.

C. Description of monument for corner and accessories established to perpetuate locating the position of the corner:

(7-Sec. 8) Set 1"IDx32" I.pipe with 4" alum. MDNR cap. Blazed, scribed, and set measuring nails in:	(6) Set 1"IDx32" I.pipe with 4" alum. MDNR cap. Blazed, scribed, and set measuring nails in:
4" Y.Birch N05W 12.2' "1/16S 8T"	12" Sugar N32W 19.2' "1/16S 8T"
6" Maple N86E 9.8' do	11" Maple S74E 6.7' do
6" Maple S55W 7.5' do	7" Y.Birch S13W 9.0' do
11" Maple N82W 17.2' do	4" Sugar S87W 17.8' do
Set sq'd cedar post adjacent. Bearings are magnetic. Distances are to nail with tag.	Set sq'd cedar post adjacent. Bearings are magnetic. Distances are to nail with tag.



Signed by Stephan J. Szyszkoski
 Surveyor's Michigan License No. 33986

Date 9/16/03