

LAND CORNER RECORDATION CERTIFICATE
Filing Requirement of Act 74, Mich. P.A. 1970

For corners in

<u>Houghton</u> (County)	Located In:	Corner Code #
1. Public Land Survey	T 51N R 35W	D5
	T 51N R 35W	C5
	T _____ R _____	_____
	T _____ R _____	_____
2. Property Controlling in Section	S _____ T _____ R _____	_____
	S _____ T _____ R _____	_____
3. Miscellaneous Property in Sec.	S _____ T _____ R _____	_____
	S _____ T _____ R _____	_____

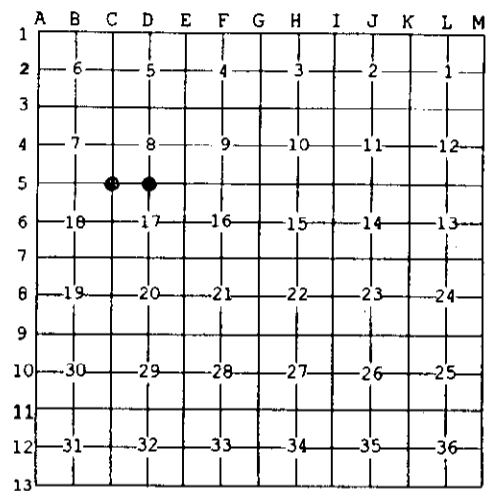
Register of Deeds Stamp & File Number

4. Lot No. _____, Recorded Plat _____
 5. Private Claims _____

Aug 28 2003

I, Stephan J. Szyszkoski, in a field survey on _____, 20____ do hereby state that under requirements of P.A. 74, Michigan P.A. of 1970, the corner points mentioned in lines 1 and 2 above were in conformance with regulations and rules therefore as required in the current manual of survey instructions of the United States Department of the Interior, Bureau of Land Management or by a decree of a Court of Law and /or that the corner points mentioned in lines 3, 4 and 5 above were in conformance with the rules of the Michigan Board of Land Surveyors or by a Decree of a Court of Law; established, re-established, monumented, recovered, found as expressed below:

NOTE: Not more than 2 corners, all in the same town and range, may be recorded on this certificate.



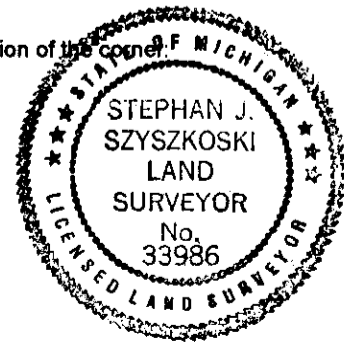
A. Description of original monument and accessories and/or subsequent restoration:
 (D5) Quarter corner common to Sections 8 and 17. 1848: Established by S.W. Higgins: West corrected between 8 & 17...39.94 Set 1/4 Section post on true line. Birch 8 N38E 42, Sugar 10 S76E 19...79.89 Section corner.
 (C5) Corner common to Sections 7-8-17-18. 1973: A.O. Enger reestablished this corner by double proportionate measurement between corners 1 mile North, 1 mile South, 1 mile West, and 2 miles East. Set 1"IDx36" I.pipe with 4" aluminum cap. Y.Birch 10 N67W 7.6', Hemlock 16 S24E 19.1', Sugar Maple 7 N88E 20.2'

B. Description of corner evidence found and/or method applied in restoring or reestablishing corner:

(D5) The original post and accessories were not recovered. Reestablished the corner on a line of mean true bearing between Section corners 2632.99' West and 2632.35' East, proportionate to the original record.
 (C5) Recovered the 1973 monument in good condition and at record bearing and distance from the 1973 accessories. The Y.Birch and Sugar Maple are in good condition with overgrown blazes. The Hemlock is a rotting stump. Left the monument in place and made two new witnesses as described below.

C. Description of monument for corner and accessories established to perpetuate locating the position of the corner:

(D5) Set 1"IDx32" I.pipe with 4" alum. MDNR cap. Blazed, scribed, and set measuring nails in: 6" Maple N53E 12.55' "1/4S N8T" 5" Sugar S24E 30.1' do 5" Maple S56W 25.1' do 6" Maple N83W 19.2' do Set sq'd cedar post adjacent. Bearings are magnetic. Distances are to nail with tag.	(C5) Found 1"ID I.pipe with 4" alum. MDNR cap. Blazed, scribed, and set measuring nails in: 9" Y.Birch N46E 21.0' "S8 NBT" 8" Y.Birch N36W 29.1' "S7 NBT" Set meas. nails in the 1973 wits: 12" Sugar S89E 20.5' 12" Y.Birch N65W 7.9' Set sq'd cedar post adjacent. Bearings are magnetic. Distances are to nail with tag.
--	---



Signed by Stephan J. Szyszkoski Date 9/16/03
 Surveyor's Michigan License No. 33986