

**LAND CORNER RECORDATION CERTIFICATE**  
**Filing Requirement of Act 74, Mich. P.A. 1970**

For corners in <u>Houghton</u> <small>(County)</small>	Located In:	Corner Code #
1. Public Land Survey	T <u>51N</u> R <u>35W</u>	<u>D4</u>
	T <u>    </u> R <u>    </u>	<u>    </u>
	T <u>    </u> R <u>    </u>	<u>    </u>
	T <u>    </u> R <u>    </u>	<u>    </u>
2. Property Controlling in Section	S <u>8</u> T <u>51N</u> R <u>35W</u>	<u>9</u>
	S <u>    </u> T <u>    </u> R <u>    </u>	<u>    </u>
3. Miscellaneous Property in Sec.	S <u>    </u> T <u>    </u> R <u>    </u>	<u>    </u>
	S <u>    </u> T <u>    </u> R <u>    </u>	<u>    </u>

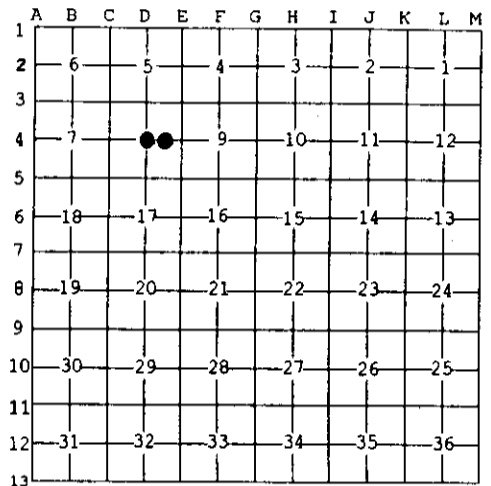
Register of Deeds Stamp & File Number

4. Lot No. \_\_\_\_\_, Recorded Plat \_\_\_\_\_  
 5. Private Claims \_\_\_\_\_

9 Sep 04 2003  
 D4 Sep 03 2003

I, Stephan J. Szyszkoski, in a field survey on \_\_\_\_\_, 20\_\_ do hereby state that under requirements of P.A. 74, Michigan P.A. of 1970, the corner points mentioned in lines 1 and 2 above were in conformance with regulations and rules therefore as required in the current manual of survey instructions of the United States Department of the Interior, Bureau of Land Management or by a decree of a Court of Law and /or that the corner points mentioned in lines 3, 4 and 5 above were in conformance with the rules of the Michigan Board of Land Surveyors or by a Decree of a Court of Law; established, re-established, monumented, recovered, found as expressed below:

NOTE: Not more than 2 corners, all in the same town and range, may be recorded on this certificate.



A. Description of original monument and accessories and/or subsequent restoration:  
 (D4) Center of Section 8. Not established in the original survey.  
 (9-Sec. 8) East 1/16 corner, Section 8. Not established in the original survey.

B. Description of corner evidence found and/or method applied in restoring or reestablishing corner:  
 (D4) Established the corner at the intersection of straight lines connecting opposite 1/4 corners.  
 (9-Sec. 8) Established the corner on a straight line between Center of Section 1341.04' West and Quarter corner 1341.04' East.

C. Description of monument for corner and accessories established to perpetuate locating the position of the corner:	
(D4) Set 1"IDx32" I.pipe with 4" alum. MDNR cap. Blazed, scribed, and set measuring nails in:	(9) Set 1"IDx32" I.pipe with 4" alum. MDNR cap. Blazed, scribed, and set measuring nails in:
6" Elm N21E 19.9' "1/4 BT"	4" Y. Birch N19E 6.65' "1/16S BT"
7" Sugar S79E 22.8' do	6" Sugar N83E 55.8' do
4" Spruce S39E 6.2' do	11" Hemlock S06W 35.55' do
12" Cedar S07W 56.4' do	12" Hemlock S49W 32.1' do
Set sq'd cedar post adjacent. Bearings are magnetic. Distances are to nail with tag.	Set sq'd cedar post adjacent. Bearings are magnetic. Distances are to nail with tag.



Signed by Stephan J. Szyszkoski Date 9/16/03  
 Surveyor's Michigan License No. 33986