

**LAND CORNER RECORDATION CERTIFICATE**  
**Filing Requirement of Act 74, Mich. P.A. 1970**

For corners in

<u>Houghton</u> (County)	Located in:	Corner Code #
1. Public Land Survey	T 51N R 35W	E4
	T 51N R 35W	E3
	T ___ R ___	_____
	T ___ R ___	_____
2. Property Controlling in Section	S ___ T ___ R ___	_____
	S ___ T ___ R ___	_____
3. Miscellaneous Property in Sec.	S ___ T ___ R ___	_____
	S ___ T ___ R ___	_____

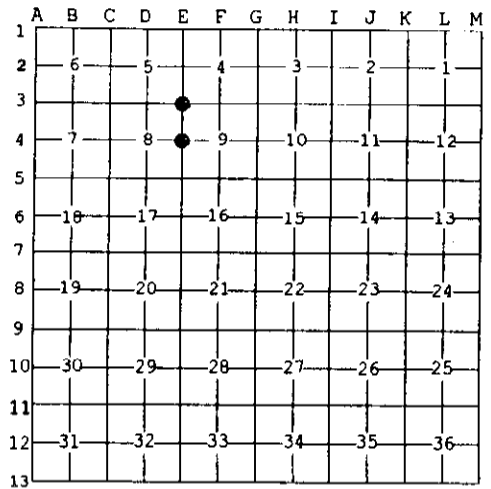
Register of Deeds Stamp & File Number

4. Lot No. \_\_\_\_\_, Recorded Plat \_\_\_\_\_  
 5. Private Claims \_\_\_\_\_

Sep 03 2003

I, Stephan J. Szyszkoski, in a field survey on \_\_\_\_\_, 20\_\_\_\_ do hereby state that under requirements of P.A. 74, Michigan P.A. of 1970, the corner points mentioned in lines 1 and 2 above were in conformance with regulations and rules therefore as required in the current manual of survey instructions of the United States Department of the Interior, Bureau of Land Management or by a decree of a Court of Law and /or that the corner points mentioned in lines 3, 4 and 5 above were in conformance with the rules of the Michigan Board of Land Surveyors or by a Decree of a Court of Law; established, re-established, monumented, recovered, found as expressed below:

**NOTE: Not more than 2 corners, all in the same town and range, may be recorded on this certificate.**



- A. Description of original monument and accessories and/or subsequent restoration:**  
 (E4) Quarter corner common to Sections 8-9. 1848: Established by S.W. Higgins: North between Sections 8 & 9...40.00 Set 1/4 Section post. Sugar 16 N23E 8, Sugar 10 S75W 8.  
 (E3) Corner common to Sections 4-5-8-9. 1959: Billy D. Buckler RLS remonumented this corner at record bearing and distance from an original B.T. Yellow Birch. Set 1" pipe with 4" brass cap. 8" Hard Maple N26W 46 links, 15" Hard Maple N86E 41 links.

**B. Description of corner evidence found and/or method applied in restoring or reestablishing corner:**

- (E4) The original post and accessories were not recovered. Reestablished the corner on a straight line between Section corners 2641.76' North and South.  
 (E3) Recovered the 1959 monument in good condition and at record bearing and distance from the remaining 1959 witness Sugar NE. The other Sugar N8T was not recovered. The OBT Y.Birch is now down and in poor condition. Left the monument in place and made new witnesses.

**C. Description of monument for corner and accessories established to perpetuate locating the position of the corner:**

- |   |  |
|---|--|
| (E4) Set 1"IDx32" I.pipe with 4" alum. MDNR cap. Blazed, scribed, and set measuring nails in:<br>10" Sugar S74E 17.7' "1/4S N8T"<br>12" Sugar S09W 6.5' do<br>13" Sugar S44W 19.8' do<br>13" Sugar N24W 4.4' do<br>Set sq'd cedar post adjacent. Bearings are magnetic. Distances are to nail with tag. | (E3) Found 1"ID I.pipe with 4" brass Michigan Dept. of Conservation cap. Blazed, scribed, and set meas. nails in:<br>14" Sugar S27E 10.4' "S9 N8T"<br>8" Sugar N60W 31.6' "S5 N8T"<br>9" Sugar N19E 12.8' "S4 N8T"<br>the 1959 witness:<br>17" Sugar N87E 27.9' overgrown blazes<br>Set sq'd cedar post adjacent. Bearings are magnetic. Distances are to nail with tag. |
|---|--|



Signed by Stephan J. Szyszkoski Date 9/16/03  
 Surveyor's Michigan License No. 33986