

# LAND CORNER RECORDATION CERTIFICATE

## FILING REQUIREMENT OF ACT 74, MICH. P.A.1970

FOR CORNERS OF--	LOCATED IN--	CORNER CODE NUMBER
1. PUBLIC LAND SURVEY _____	T. <u>51</u> <sup>N.</sup> <del>XX</del> , R. <u>35</u> <sup>XX</sup> <del>W.</del>	B5; C4; & C5
2. PROPERTY CONTROLLING IN SECTION _____	, T. _____ <sup>N.</sup> <del>S.</del> , R. _____ <sup>E.</sup> <del>W.</del>	_____
3. MISCELLANEOUS PROPERTY IN SECTION _____	, T. _____ <sup>N.</sup> <del>S.</del> , R. _____ <sup>E.</sup> <del>W.</del>	_____
4. LOT NO. _____, RECORDED PLAT _____		
5. PRIVATE CLAIMS _____		

REGISTER OF DEEDS STAMP AND FILING NUMBER

I, Arthur O. Enger do hereby certify that under requirements of P.A. 74, Michigan P.A. of 1970, the corner points mentioned in lines 1 and 2 above (identified with circles on index code diagram—over) were, in a field survey on see below 19\_\_\_\_, established, re-established, monumented, re-monumented, recovered or restored as expressed below and in conformance with regulations and rules therefore as required in the current manual of survey instructions of the United States Department of the Interior, Bureau of Land Management or by a decree of a court of law. Furthermore, that the corner points mentioned in lines 3, 4 and 5 above were, in a field survey on \_\_\_\_\_ 19\_\_\_\_, found, recovered, restored, established or re-established as expressed below and in conformance with the rules of the Michigan State Board of Registration for Land Surveyors or, by a Decree of a Court of law:

**A. Description of original monument and accessories and/or subsequent restoration:**

- Corner B5:** Wood post (Not found. No subsequent monuments found.)  
           Birch 16 S10W 15 (Not found. No subsequent accessories found.)  
           Hemlock 30 N57E 20       "   "   "   "   "   "   "
- Corner C4:** Wood post (Not found. No subsequent monuments found.)  
           Balsam 8 N45W 4 (Not found. No subsequent accessories found.)  
           Cedar 10 S85E 10       "   "   "   "   "   "   "
- Corner C5:** Wood post (Not found. No subsequent monuments found.)  
           Hemlock 28 S40E 52 (Not found. No subsequent accessories found.)  
           Sugar 10 N55W 48       "   "   "   "   "   "   "

**B. Description of corner evidence found and/or method applied in restoring or re-establishing corner:**

- Corner B5:** Re-established 11/29/73 proportionately on line between Sec. Corner 40.08 ch. E and Sec. Corner 41.71 ch. W.
- Corner C4:** Re-established 11/29/73 on line between Sec. Corners 40.15 ch. to N and to S. Corner falls 2.47 ch. N of N. bank of a stream; the original record distance was 2.44 ch.
- Corner C5:** Re-established 11/13/73 by double proportionate measurement from corners 1 mile N, 1 mile S, 1 mile W, and 2 miles E.

**C. Description of monument for corner and accessories established to perpetuate locating the position of the corner:**

- Corner B5:** 3½" O.D. x 42" concrete-filled iron pipe with brass cap.  
           Y. Birch 7 S33°E (mag.) 7.2 ft. "1/4S, NBT"  
           Sugar Maple 10 N72°E (mag.) 10.7 ft. "1/4S, NBT"
- Corner C4:** 3½" O.D. x 42" concrete-filled iron pipe with brass cap.  
           Y. Birch 7 S68°E (mag.) 9.5 ft. "1/4S, NBT"  
           Y. Birch 7 N½°E (mag.) 8.4 ft. "1/4S, NBT"  
           Distances are horizontal.
- Corner C5:** 1" I.D. x 36" iron pipe with 4" aluminum cap.  
           Y. Birch 10 N67°W (mag.) 7.6 ft. "S7, NBT"  
           Hemlock 16 S24°E (mag.) 19.1 ft. "S17, NBT"  
           Sugar Maple 7 N88°E (mag.) 20.2 ft. "S8, NBT"

SIGNED BY \_\_\_\_\_ DATE \_\_\_\_\_

SURVEYOR'S MICHIGAN REGISTRATION NO. \_\_\_\_\_ (SEAL)

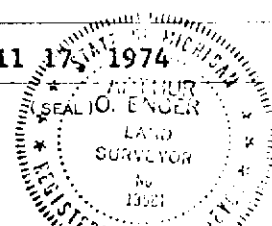
**FOR STATE AND UNITED STATES AGENCIES:**

SIGNED BY \_\_\_\_\_ DATE \_\_\_\_\_

APPROVED AND SIGNED BY Arthur O. Enger DATE April 17, 1974  
MICHIGAN REGISTERED LAND SURVEYOR

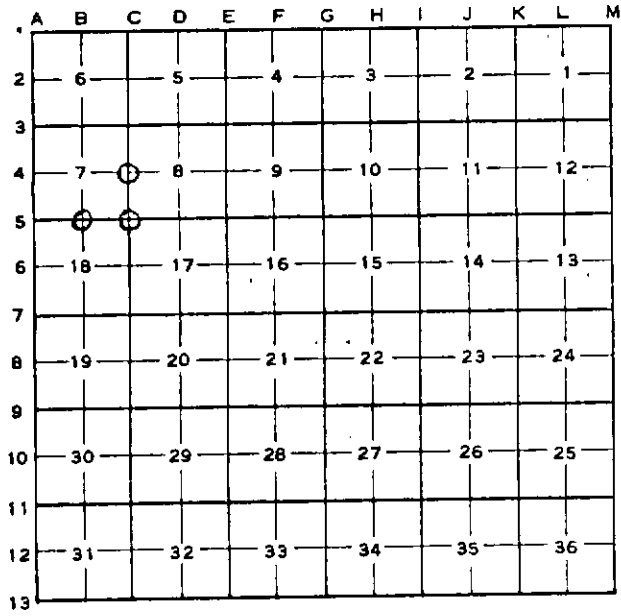
**Michigan Department of Natural Resources**

SURVEYOR'S MICHIGAN REGISTRATION NO. 13581



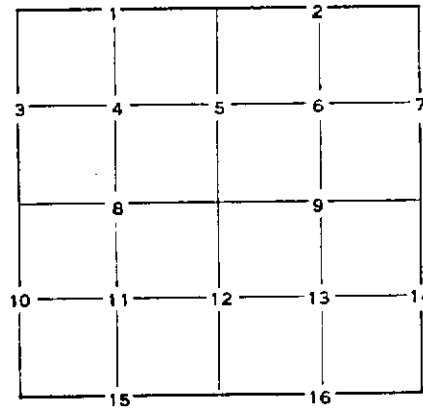
# CORNER NUMBERING CODE DIAGRAMS FOR IDENTIFYING LAND CORNER RECORDATIONS AND INDEXING

FOR PUBLIC LAND SURVEY CORNERS IN THE  
T. 51N, R. 35W (MENTIONED OVER)



Apply letter prefix for corner points encircled above for identifying corner recordation numbers over.

FOR PROPERTY CONTROLLING AND MISC. PROPERTY CORNERS WITHIN THE SECTION (MENTIONED OVER AND EXCLUDE LOT CORNER)



1. Above coded numbers are positioned on 1/16 fractional lines of the section.
2. Township corner code numbers shall be applied to corners of above typical section not numbered.
3. Miscellaneous property corners within a section, located at points other than numbered above, shall be referenced to at least two of above corner code numbers.
4. Private claim corners to be tied to rectangular land corners if possible - sketch required below.

EXPLANATORY SKETCH IF NECESSARY -- BELOW