

STATE OF MICHIGAN
DEPARTMENT
OF
NATURAL RESOURCES

LAND CORNER RECORD

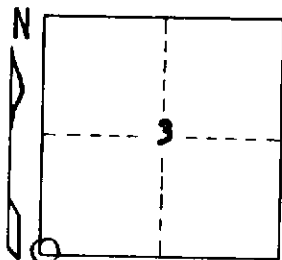
Houghton COUNTY
T 51N R 35W

DESCRIPTION OF CORNER Section Corner 3, 4, 9, and 10

CORNER MONUMENT 1" I. D. x 36" iron pipe with 4" aluminum cap

DATE MONUMENT PLACED AND WITNESSED June 25, 1969

WITNESSES TO CORNER..... Y. Birch 8 S88°W 27 lks. "S4, NBT"



Sugar Maple N 38½°E 24 lks. "S3, NBT"

Hemlock 15 S54°E 65 lks. "S10, NBT"

AND

CIRCLE CORNER REGISTERED

DESCRIPTION IN DETAIL AS TO HOW CORNER WAS LOCATED AND IDENTIFIED OR RESTORED.

Corner set by double proportionate measurement from corners 79.822 ch. W; 79.794 ch. E; 79.224 ch. S; and 79.882 ch. N. Found no evidence of original corner or its accessories. Found a 1" x 1" squared, sawn stake bearing S63½°W 25 lks. from corner, and 4-sided blazes on a small maple tree about 2½ lks. W. of it, but believe they only indicate approximate corner location.

Corner lies in old N & S woods road, which may have been established on or near the section line many years ago.

SURVEYOR'S SEAL

DISTRIBUTION:

SIGNED

Arthur P. Engler
REGISTERED LAND SURVEYOR

DATE

1/22/71

County Courthouse
Area Forester (Regions I & II)
District or Region Surveyor
Forestry Div., Lansing

R 4047
Rev. 10/68