

LAND CORNER RECORDATION CERTIFICATE

FILING REQUIREMENT OF ACT 74, MICH. P.A.1970

FOR CORNERS OF--:	LOCATED IN--:	CORNER CODE NUMBER
1. PUBLIC LAND SURVEY _____	T. <u>51</u> N. S. , R. <u>35</u> W. E.	<u>E5; E6; & G3</u>
2. PROPERTY CONTROLLING IN SECTION _____	, T. _____, S., R. _____, E., W.	_____
3. MISCELLANEOUS PROPERTY IN SECTION _____	, T. _____, S., R. _____, E., W.	_____
4. LOT NO. _____, RECORDED PLAT _____		
5. PRIVATE CLAIMS _____		

REGISTER OF DEEDS STAMP AND
FILING NUMBER

I, Arthur O. Enger do hereby certify that under requirements of P.A. 74, Michigan P.A. of 1970, the corner points mentioned in lines 1 and 2 above (identified with circles on index code diagram - over) were, in a field survey on see below 19 , established, re-established, monumented, re-monumented, recovered or restored as expressed below and in conformance with regulations and rules therefore as required in the current manual of survey instructions of the United States Department of the Interior, Bureau of Land Management or by a decree of a court of law. Furthermore, that the corner points mentioned in lines 3, 4 and 5 above were, in a field survey on _____ 19 , found, recovered, restored, established or re-established as expressed below and in conformance with the rules of the Michigan State Board of Registration for Land Surveyors or, by a Decree of a Court of law:

A. Description of original monument and accessories and/or subsequent restoration:

- Corner E5:** Wood post (Not found. No subsequent monuments found.)
 Sugar 16 N33E 40 (Not found. No subsequent accessories found.)
 Birch 12 N73W 17 (Not found. No subsequent accessories found.)
- Corner E6:** Wood post (Not found. No subsequent monuments found.)
 Cedar 10 S32E 12 (Not found. No subsequent accessories found.)
 Cedar 12 S45W 17 (Not found. No subsequent accessories found.)
- Corner G3:** Original post and accessories not found. Corner had been re-established and monumented by the undersigned on 6/25/69; the monument was subsequently destroyed by vandals on snowmobiles.

B. Description of corner evidence found and/or method applied in restoring or re-establishing corner:

- Corner E5:** Re-established 10/24/73 by double proportionate measurement from corners 1 mi. S, 1 mi. N, 1 mi. E, and 2 mi. W.
- Corner E6:** Re-established 10/24/73 on line between Sec. Corners 40.032 ch. to N and to S.
- Corner G3:** Destroyed monument replaced on 6/28/73. Corner previously re-established by double proportionate measurement from corners 79.822 ch. W; 79.794 ch. E; 79.224 ch. S; and 79.882 ch. N. Corner lies in old N & S woods road, which may have been laid out on or near the section line many years ago.

C. Description of monument for corner and accessories established to perpetuate locating the position of the corner:

- Corner E5:** 1" I.D. x 36" iron pipe with 3½" aluminum cap.
 Sugar Maple 12 N54°E (mag.) 5.9 ft. "S 9, NBT"
 Sugar Maple 5 S43°E (mag.) 14.5 ft. "S16, NBT"
 Red Maple 6 S36°W (mag.) 24.1 ft. "S17, NBT"
- Corner E6:** 1" I.D. x 36" iron pipe with 4" aluminum cap.
 W. Spruce 4 S83°E (mag.) 23.7 ft. "1/4S, NBT"
 W. Spruce 4 N81°W (mag.) 15.4 ft. "1/4S, NBT"
 Distances horizontal. Also squared & scribed a 5" aspen S83°W 2.5 ft.
- Corner G3:** 5"x36" re-inforced concrete cylinder with aluminum cap.
 Y. Birch 8 S88°W (mag.) 17.8 ft. "S4, NBT"
 Sugar Maple ? N38½°E (mag.) 16.1 ft. "S3, NBT"
 Hemlock 15 S54°E (mag.) 42.2 ft. "S10, NBT"

SIGNED BY _____ DATE _____

SURVEYOR'S MICHIGAN REGISTRATION NO. _____ (SEAL)

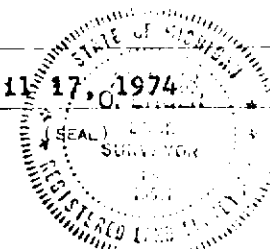
FOR STATE AND UNITED STATES AGENCIES:

SIGNED BY _____ DATE _____

APPROVED AND SIGNED BY Arthur O. Enger DATE April 17, 1974
MICHIGAN REGISTERED LAND SURVEYOR

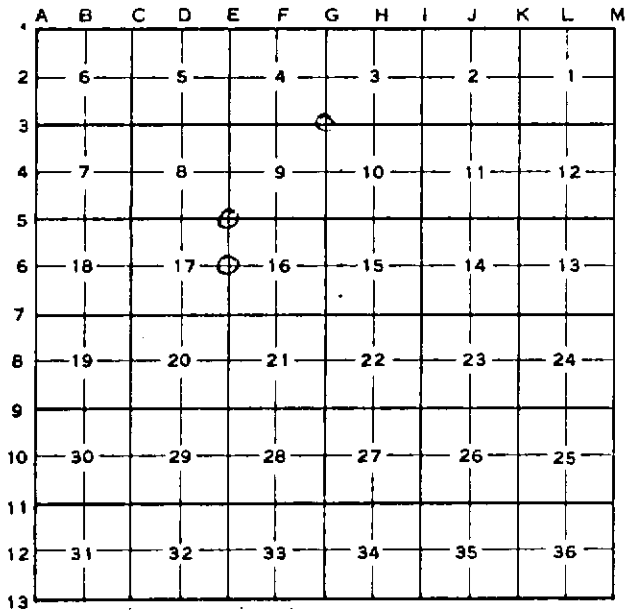
Michigan Department of Natural Resources

SURVEYOR'S MICHIGAN REGISTRATION NO. 13581



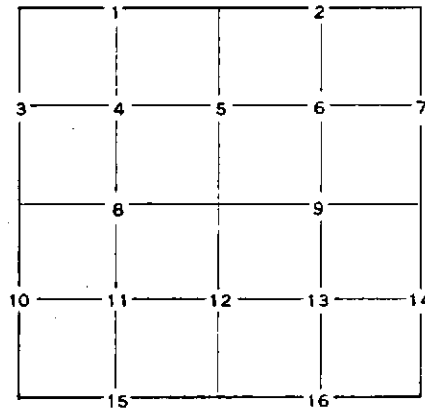
CORNER NUMBERING CODE DIAGRAMS FOR IDENTIFYING LAND CORNER RECORDATIONS AND INDEXING

FOR PUBLIC LAND SURVEY CORNERS IN THE
T. 51N, R. 35W (MENTIONED OVER)



Apply letter prefix for corner points encircled above for identifying corner recordation numbers over.

FOR PROPERTY CONTROLLING AND MISC. PROPERTY CORNERS WITHIN THE SECTION (MENTIONED OVER AND EXCLUDE LOT CORNER)



1. Above coded numbers are positioned on 1/16 fractional lines of the section.
2. Township corner code numbers shall be applied to corners of above typical section not numbered.
3. Miscellaneous property corners within a section, located at points other than numbered above, shall be referenced to at least two of above corner code numbers.
4. Private claim corners to be tied to rectangular land corners if possible - sketch required below.

EXPLANATORY SKETCH IF NECESSARY -- BELOW

