

MICHIGAN  
DEPARTMENT OF CONSERVATION  
FORESTRY DIVISION

# LAND CORNER RECORD

T. 51 N.R. 35 W

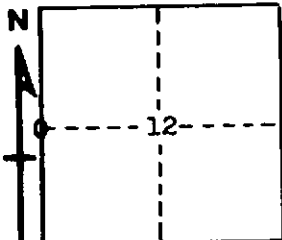
Houghton COUNTY

DESCRIPTION OF CORNER 1/4 Corner between Secs. 11-12

CORNER MONUMENT 1" Pipe with 4" Aluminum Cap

DATE MONUMENT PLACED AND WITNESSED 4/22/66

WITNESSES TO CORNER..... 8" W. Spruce (1/4S NBT), N 11° E, 14.5'



8" W. Spruce (1/4S NBT), South, 1.0'

AND

CIRCLE CORNER REGISTERED

DESCRIPTION IN DETAIL AS TO HOW CORNER WAS LOCATED AND IDENTIFIED OR RESTORED.

Re-established this Corner midway and on line between two Section Corners.

Found no evidence of Original Corner.

Found old, down fence about 2.00 chains North, which appears to have enclosed only the high ground.

Streams both North and South check well with corner location.

SURVEYOR'S SEAL

SIGNED Billy D. Buckler DATE 6/3/1966  
REGISTERED LAND SURVEYOR