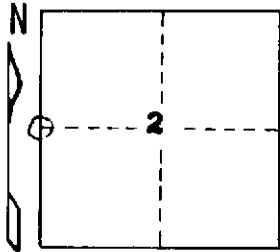


STATE OF MICHIGAN  
DEPARTMENT  
OF  
NATURAL RESOURCES

LAND CORNER RECORD

Houghton COUNTY  
T 51N R 35W

DESCRIPTION OF CORNER 1/4 corner between Section 2 and 3  
CORNER MONUMENT 1" I.D. x 36" iron pipe with 4" aluminum cap  
DATE MONUMENT PLACED AND WITNESSED July 2, 1969  
WITNESSES TO CORNER..... Sugar Maple 6 S42 1/2°W 61 lks. "1/4S NBT"



Sugar Maple 5 N54°W 37 lks. "1/4S NBT"  
AND

CIRCLE CORNER REGISTERED

DESCRIPTION IN DETAIL AS TO HOW CORNER WAS LOCATED AND IDENTIFIED OR RESTORED.

Monument placed by proportionate measurement on line between section corners 39.36 chains north and 39.66 chains south. (Record distances are 39.70 chains and 40.00 chains, respectively.) Found no evidence of original post or its accessories, or of any replacement monument or accessories.

A monument purporting to be this corner was recorded by B. D. Buckler on 6/3/1966. Buckler placed the monument by proportionate measurement between section corners to north and south. As a consequence of the section corner to the south being moved farther north by the undersigned, removal of this corner to a new proportionate position was necessitated. Buckler's corner (now obliterated) was S31°W 32 1/2 links from corner recorded here.

SURVEYOR'S SEAL

DISTRIBUTION:

SIGNED

Arthur C. Eger  
REGISTERED LAND SURVEYOR

DATE

11/22/71

County Courthouse  
Area Forester (Regions I & II)  
District or Region Surveyor  
Forestry Div., Lansing

R 4047  
Rev. 10/68