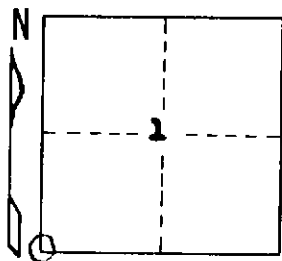


STATE OF MICHIGAN
DEPARTMENT
OF
NATURAL RESOURCES

LAND CORNER RECORD

Houghton COUNTY
T 51N R 35W

DESCRIPTION OF CORNER Section Corner 1, 2, 11, and 12
CORNER MONUMENT 1" I. D. x 36" iron pipe with 4" aluminum cap
DATE MONUMENT PLACED AND WITNESSED July 28, 1969
WITNESSES TO CORNER..... W. Pine 16 N60°E 30½ lks. "S1, NBT"



Red Maple 12 N27°W 42½ lks. "S2, NBT"
Sugar Maple 4 S11°E 29 lks. "S12, NBT"

AND

CIRCLE CORNER REGISTERED

DESCRIPTION IN DETAIL AS TO HOW CORNER WAS LOCATED AND IDENTIFIED OR RESTORED.

Monument placed on southerly extension of an old N & S fence line originating at the intersection of a N & S fence line and the centerline of an old E & W woods road which appears to have been intended to be on the E & W quarter-line of Sec. 1. The latitude of this corner was fixed midway between the above mentioned fence and road intersection and an old E & W fence line believed by the undersigned to be on the E & W quarterline of Sec. 12, this distance being 79.24 chains. (Refer to Enger's corner record for 1/4 cor. bet. Sec. 11 & 12 for additional information).

This corner is 80.32 chains southerly of an original corner on the north township boundary, or 0.47 chains shorter than the record of 80.79 chains. Measurements of the section line between Sec. 2 & 3 show a distance of 79.02 chains, or 0.68 ch. shorter than the record 79.70 chains; similarly the line between Sec. 3 & 4 is 79.88 chains, or 0.78 ch. shorter than the record 80.66 chains. This would indicate that N & S distances in this township tend to be shorter than the record, which supports the condition the undersigned believes to be true of the line between Sec. 1 & 2.

SURVEYOR'S SEAL

(see other side)

DISTRIBUTION:

SIGNED

Arthur C. Enger
REGISTERED LAND SURVEYOR

DATE

1/22/71

County Courthouse
Area Forester (Regions I & II)
District or Region Surveyor
Forestry Div., Lansing