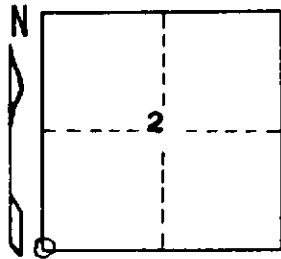


STATE OF MICHIGAN  
DEPARTMENT  
OF  
NATURAL RESOURCES

LAND CORNER RECORD

Houghton COUNTY  
T 51N R 35W

DESCRIPTION OF CORNER Section Corner 2, 3, 10, and 11  
CORNER MONUMENT 1" I.D. x 36" iron pipe with 4" aluminum cap  
DATE MONUMENT PLACED AND WITNESSED July 2, 1969  
WITNESSES TO CORNER..... Sugar Maple 7 S30°E 73 lks. "S11, NBT"



Red Maple 4 S19°W 26 lks. "S10, NBT"  
Balsam 7 N13°W 42½ lks. "S3, NBT"  
AND

CIRCLE CORNER REGISTERED

DESCRIPTION IN DETAIL AS TO HOW CORNER WAS LOCATED AND IDENTIFIED OR RESTORED.

Monument placed by double proportionate measurement from section corners 1 mile N, 1 mile S, 1 mile E, and 2 miles W. Found no identifiable evidence of original monument or its accessories. Corner lies N 22°E 0.55 chains from corner reported in B. D. Buckler's corner record dated 6/3/1966, which was set from two down, blazed cedars obviously quite old, but with nothing to support the position as, or pinpoint, the original corner location. Corner as placed proportionately agrees much better with stream crossings reported in original field notes as being 2.50 chains north and 3.70 chains east of the corner. These stream crossings are 2.25 chains north and 3.17 chains east of the corner as set here.

The undersigned, not considering the blazed trees to be as acceptable corner evidence as the proportionate measurements, removed and obliterated Buckler's corner. The blazed cedars bear S13°W 48½ links and S13°W 67 links, respectively, from corner recorded here.

SURVEYOR'S SEAL

SIGNED Arthur C. Enger DATE 1/22/71  
REGISTERED LAND SURVEYOR

DISTRIBUTION:

County Courthouse  
Area Forester (Regions I & II)  
District or Region Surveyor  
Forestry Div., Lansing

R 4047  
Rev. 10/68