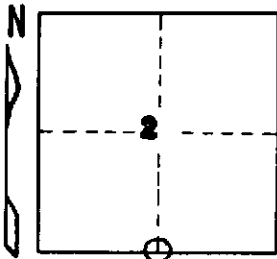


STATE OF MICHIGAN
DEPARTMENT
OF
NATURAL RESOURCES

LAND CORNER RECORD

Houghton COUNTY
T 51N R 35W

DESCRIPTION OF CORNER 1/4 corner between Section 2 and 11
CORNER MONUMENT 1" I.D. x 36" iron pipe with 4" aluminum cap
DATE MONUMENT PLACED AND WITNESSED July 28, 1969
WITNESSES TO CORNER..... Red Maple 5 N85 $\frac{1}{2}$ ^oW 25 $\frac{1}{2}$ lks. "1/4S, NBT"



Red Maple 4 N88^oE 9 $\frac{1}{2}$ lks. "1/4S, NBT"
Aspen 6 N57^oE 25 $\frac{1}{2}$ lks. "1/4S, NBT"
AND

CIRCLE CORNER REGISTERED

DESCRIPTION IN DETAIL AS TO HOW CORNER WAS LOCATED AND IDENTIFIED OR RESTORED.

Monument placed midway on line between section corners 39.84 chains to east and west. Found no evidence of original post or its accessories or of any replacement monument or accessories. Corner lies on high ground about 1 chain north of a small drainage way (dry on this date) which corresponds to the bed of a small stream mentioned in the original field notes.

SURVEYOR'S SEAL

DISTRIBUTION:

SIGNED

Arthur C. Enger
REGISTERED LAND SURVEYOR

DATE

1/22/71

County Courthouse
Area Forester (Regions I & II)
District or Region Surveyor
Forestry Div., Lansing

R 4047
Rev. 10/68