

LAND CORNER RECORDATION CERTIFICATE  
Filing Requirement of Act 74, Mich. P.A. 1970

For corners in  
Noughton

Located In:	Corner Code #
1. Public Land Survey T 51N R 35W	HS
T R	
T R	
T R	
2. Property Controlling in Section S 15 T 51N R 35W	6
S T R	
3. Miscellaneous Property in Sec. S T R	
S T R	

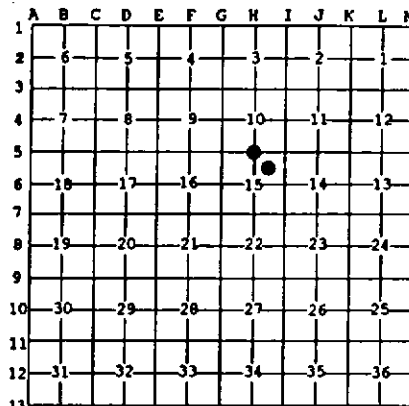
Register of Deeds Stamp & File Number

4. Lot No. \_\_\_\_\_, Recorded Plat \_\_\_\_\_  
5. Private Claims \_\_\_\_\_

6 Jul 21 1997  
HS Aug 04 1997

I, Stephan J. Szyszkoski, in a field survey on \_\_\_\_\_, 19\_\_\_\_ do hereby state that under requirements of P.A. 74, Michigan P.A. of 1970, the corner points mentioned in lines 1 and 2 above were in conformance with regulations and rules therefore as required in the current manual of survey instructions of the United States Department of the Interior, Bureau of Land Management or by a decree of a Court of Law and for that the corner points mentioned in lines 3, 4 and 5 above were in conformance with the rules of the Michigan Board of Land Surveyors or by a Decree of a Court of Law, established, re-established, monumented, recovered, found as expressed below:

NOTE: Not more than 2 corners, all in the same town and range, may be recorded on this certificate.



A. Description of original monument and accessories and/or subsequent restoration:  
(HS) Quarter corner common to Sections 10-15. Corner reestablished in 1969 by A.O. Enger, RLS: "Monument placed on line between section corners 40.08 chains to east and west. Found no evidence of original post or its accessories or of any replacement monument or accessories. Found a 1" cedar marked "App 1/4" with yellow tree marking paint bearing S10E 26.5 links from corner. Corner monument is 1" I.D. x 36" iron pipe with 4" aluminum cap. Witnesses to corner Cedar 14 S10E 26.5 links, Red Maple 5 N13W 17 links".  
(6-Sec. 15) Northeast 1/16 corner, Section 15. Corner not established in the original survey. Found no subsequent record.

B. Description of corner evidence found and/or method applied in restoring or reestablishing corner.

(HS) Recovered the 1969 monument, as described, in good condition, and at record bearing and distance from the 1969 witnesses. The Cedar is now dead but standing. The Maple is in good condition. Determined that the monument is 40.080 east of Section corner to west, and 39.970 chains west of Section corner to east. I attribute the difference with the record to the harsh terrain over this line and accept the monument as a careful and faithful reestablishment of the position of the original corner. Left the monument in place and marked three new accessories as described below. Corner witnessed by B.Wheeler, Baraga District Office.  
(6-Sec. 15) Found no evidence of prior monumentation at the corner position. Established the corner at the intersection of straight lines connecting opposite 1/16 corners, only those to the north and west being currently monumented. At the position for the corner, I placed a 1" I.D. x 32" iron pipe capped with a 4" dia. cast aluminum MDNR tablet, appropriately stamped. Corner placed and witnessed by D.Lampela and B.Wheeler, Baraga District Office.

C. Description of monument for corner and accessories established to perpetuate locating the position of the corner.

(HS) Found 1" pipe with 4" MDNR cap. (6) Set 1" pipe with 4" MDNR cap.  
Found the 1969 witness 8" Red Maple N10W 11.2' with old blazes. Blazed and scribed the following bearing trees:  
Blazed and scribed the following:  
4" Sugar N40E 16.3' "1/4S NBT"  
6" Sugar S02E 28.6' "1/4S NBT"  
4" Sugar S25W 18.9' "1/4S NBT"  
Placed a 2" maple post adjacent. Bearings are magnetic. Dist. to notch in lower blaze.  
Blazed and scribed the following bearing trees:  
10" Sugar N39E 25.1' "NE1/16 BT"  
16" Sugar S89E 8.1' "NE1/16 BT"  
4" Ironwood clump S03E 20.1' do  
8" Sugar N39W 18.5' "NE1/16 BT"  
Bearings are magnetic. Dist. to notch in lower blaze.



Signed by Stephan J. Szyszkoski Date 2/9/98  
Surveyor's Michigan License No. 33986

For the Michigan Department of Natural Resources - Forest Management Division