

LAND CORNER RECORDATION CERTIFICATE
Filing Requirement of Act 74, Mich. P.A. 1970

For corners in

<u>Houghton</u> (County)	Located In:	Corner Code #
1. Public Land Survey	T <u>51N</u> R <u>36W</u>	<u>I6</u>
	T <u>51N</u> R <u>36W</u>	<u>J7</u>
	T _____ R _____	_____
	T _____ R _____	_____
2. Property Controlling in Section	S _____ T _____ R _____	_____
	S _____ T _____ R _____	_____
3. Miscellaneous Property in Sec.	S _____ T _____ R _____	_____
	S _____ T _____ R _____	_____

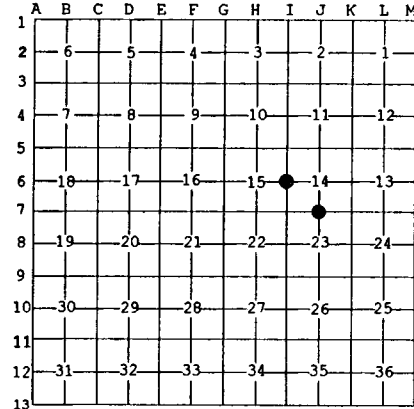
Register of Deeds Stamp & File Number

4. Lot No. _____, Recorded Plat _____
 5. Private Claims _____

J7 Apr 03 2000
 I6 Mar 27 2000

I, Stephan J. Szyszkoski, in a field survey on _____, 19____ do hereby state that under requirements of P.A. 74, Michigan P.A. of 1970, the corner points mentioned in lines 1 and 2 above were in conformance with regulations and rules therefore as required in the current manual of survey instructions of the United States Department of the Interior, Bureau of Land Management or by a decree of a Court of Law and/or that the corner points mentioned in lines 3, 4 and 5 above were in conformance with the rules of the Michigan Board of Land Surveyors or by a Decree of a Court of Law, established, re-established, monumented, recovered, found as expressed below.

NOTE: Not more than 2 corners, all in the same town and range, may be recorded on this certificate.



- A. Description of original monument and accessories and/or subsequent restoration:
- (I6) Quarter corner common to Sections 14-15. Corner reestablished in 1959 and recorded in 1960 by Billy D. Buckler, RLS. 1" pipe with 4" brass cap. 12" Sugar Maple S42E 16 links, 17" Y.Birch S64W 49 links.
 - (J7) Quarter corner common to Sections 14-23. Reestablished in 1970 and recorded in 1972 by A.O.Enger, RLS. 1" ID x 36" iron pipe with 4" aluminum cap. Red Maple 16 S51W 39.0', Sugar Maple 8 S34E 6.2'.

B. Description of corner evidence found and/or method applied in restoring or reestablishing corner:

- (I6) Recovered the 1959 monument, a 1" ID iron pipe capped with a 4" brass State of Michigan tablet, in good condition, projecting 2.2 ft., and at record bearing and distance from the 1959 witnesses. The Sugar is in good condition with overgrown blazes, and the Y.Birch is now a stump. Left the monument in place and made new accessories as described below.
- (J7) Recovered the 1970 monument as described, a 1" ID iron pipe capped with a 4" dia. cast aluminum State of Michigan tablet, appropriately stamped, in good condition, and at record bearing and distance from the 1970 witness trees, both recovered in good condition with overgrown blazes. I note an approx. 10 degree difference in mag. bearing to the NBTs. This is several times the difference lately observed at other 1970 corners in this area. Left the monument in place and made two new witnesses as described below.

C. Description of monument for corner and accessories established to perpetuate locating the position of the corner:

- | | |
|---|---|
| (I6) Found 1" pipe with 4" brass cap.
The 1959 wit:
16" Sugar S38E 10.2' w/overgrown blz.
Blazed and scribed the following:
8" Y.Birch N82E 17.7' "1/4S NBT"
12" Y.Birch S80W 62.0' do
8" Maple N22W 25.1' do
Placed squared cedar post adjacent.
Bearings are magnetic. Distances are to notch in lower blaze. | (J7) Found 1" pipe with 4" alum. cap.
The 1970 witnesses:
10" Sugar S21E 6.2' overgrown blazes
18" Maple S61W 39.0' do
8" Sugar N37E 29.6' "1/4S NBT"
7" Sugar N77W 22.8' do
Placed a squared Sugar post adjacent.
Bearings are magnetic. Distances are to notch in lower blaze. |
|---|---|



Signed by Stephan J. Szyszkoski Date 5/1/00
 Surveyor's Michigan License No. 33986

For the Michigan Department of Natural Resources - Forest Management Division