

**LAND CORNER RECORDATION CERTIFICATE**  
**Filing Requirement of Act 74, Mich. P.A. 1970**

For corners in

Houghton

(County)

Located In:

Corner Code #

1. Public Land Survey

T	51N	R	36N	610
T	51N	R	36N	69
T		R		
T		R		

2. Property Controlling in Section

S		T	R	
S		T	R	

3. Miscellaneous Property in Sec.

S		T	R	
S		T	R	

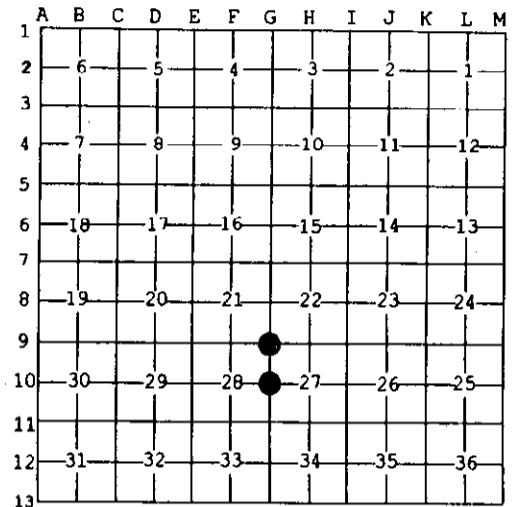
Register of Deeds Stamp & File Number

4. Lot No. \_\_\_\_\_, Recorded Plat \_\_\_\_\_  
 5. Private Claims \_\_\_\_\_

Aug 07 2003

I, Stephan J. Szyszkoski, in a field survey on \_\_\_\_\_, 20\_\_ do hereby state that under requirements of P.A. 74, Michigan P.A. of 1970, the corner points mentioned in lines 1 and 2 above were in conformance with regulations and rules therefore as required in the current manual of survey instructions of the United States Department of the Interior, Bureau of Land Management or by a decree of a Court of Law and /or that the corner points mentioned in lines 3, 4 and 5 above were in conformance with the rules of the Michigan Board of Land Surveyors or by a Decree of a Court of Law; established, re-established, monumented, recovered, found as expressed below:

NOTE: Not more than 2 corners, all in the same town and range, may be recorded on this certificate.



**A. Description of original monument and accessories and/or subsequent restoration:**  
 (G10) Quarter corner common to Sections 27-28. 1848: Established by S.W. Higgins: North between Sections 27 & 28...40.00 Set 1/4 Section post, Birch 6 S85W 8, Birch 14 S65E 20...80.00 Set post corner Sections 21,22,27,28. Found no subsequent record.  
 (G9) Corner common to Sections 21-22-27-28. 1962: Remonumented from local evidence by Billy D. Buckler RLS: "This corner was replaced from birch stub blazed for corner some time ago. It fits fairly well with corners in vicinity. No original evidence. Set 1" iron pipe with 4" brass cap. 14" Sugar S88W 48 links, 14" Sugar S72E 30.5 links, 7" Sugar N39W 61.5 links.

**B. Description of corner evidence found and/or method applied in restoring or reestablishing corner:**  
 (G10) The original post and accessories were not recovered. Reestablished the corner midway and on a line of mean true bearing between Section corners 2633.31' north and south. Observed true bearing of this line is N 2 deg. 23'E.  
 (G9) Recovered the 1962 monument in good condition and at record bearing and distance from the 1962 NBTs. The Sugar S88W is dead and down. The other two Sugar trees are in good condition with overgrown blazes. Marked two new accessories as described below.

**C. Description of monument for corner and accessories established to perpetuate locating the position of the corner:**  
 (G10) Set 1"IDx32" I.pipe with 4" alum. MDNR cap. Blazed, scribed, and set measuring nails in:  
 8" Maple S81E 24.25'      "1/4S NBT"  
 7" Maple S22E 12.5'      do  
 7" Maple N41W 16.5'      do  
 15" Spruce N11W 26.3'      do  
 Set sq'd cedar post adjacent. Bearings are magnetic. Distances are to nail with tag.  
 (G9) Found 1"ID I.pipe with 4" brass MI Dept. of Conservation cap. Set measuring nails with tags in:  
 9" Sugar N35W 41.0' (1962 wit.)  
 Sugar S71E 20.85'      do  
 Also blazed and scribed:  
 9" Sugar S01E 17.1'      "S27 NBT"  
 9" Y.Birch S50W 21.8'      "S28 NBT"  
 Set sq'd cedar post adjacent. Bearings are magnetic. Distances are to nail with tag.



Signed by Stephan J. Szyszkoski Date 8/18/03  
 Surveyor's Michigan License No. 33986