

LAND CORNER RECORDATION CERTIFICATE
Filing Requirement of Act 74, Mich. P.A. 1970 as Amended

For corners in

<u>Houghton</u> (County)	Located In:	Corner Code #
1. Public Land Survey	T <u>51N</u> R <u>36W</u>	<u>H7</u>
	T <u>51N</u> R <u>36W</u>	<u>G7</u>
	T _____ R _____	_____
	S _____ T _____ R _____	_____
2. Property Controlling in Section	S _____ T _____ R _____	_____
	S _____ T _____ R _____	_____
3. Miscellaneous Property in Sec.	S _____ T _____ R _____	_____
	S _____ T _____ R _____	_____

4. Lot No. _____, Recorded Plat _____
 5. Private Claims _____

Sep 01 2004

I, Stephan J. Szyszkoski, in a field survey on _____, 20____ do hereby state that under requirements of P.A. 74, Michigan P.A. of 1970, the corner points mentioned in lines 1 and 2 above were in conformance with regulations and rules therefore as required in the current manual of survey instructions of the United States Department of the Interior, Bureau of Land Management or by a decree of a Court of Law and /or that the corner points mentioned in lines 3, 4 and 5 above were in conformance with the rules of the Michigan Board of Land Surveyors or by a Decree of a Court of Law; established, re-established, monumented, recovered, found as expressed below:

NOTE: Not more than 2 corners, all in the same town and range, may be recorded on this certificate.

A. Description of original monument and accessories and/or subsequent restoration:

(H7) Quarter corner common to Sections 15 and 22. 1848 - Established by S.W. Higgins: West corrected between Sections 15 & 22...40.44 Set 1/4 Section post on true line. Sugar 12 N58W 8 links, Balsam 12 S45W 21 links. ...80.88 Section corner.
 (G7) Corner common to Sections 15-16-21-22. 1959 - Reestablished by Billy D. Buckler, RLS from stream calls north, south, and west, a lake outlet to north, marsh to east, and Section corners east and west. Set 1" I.pipe with 4" brass cap. 18" W.Pine N7W 32 links, 16" W.Pine S61W 43 links, 12" W.Pine S15E 53 links.

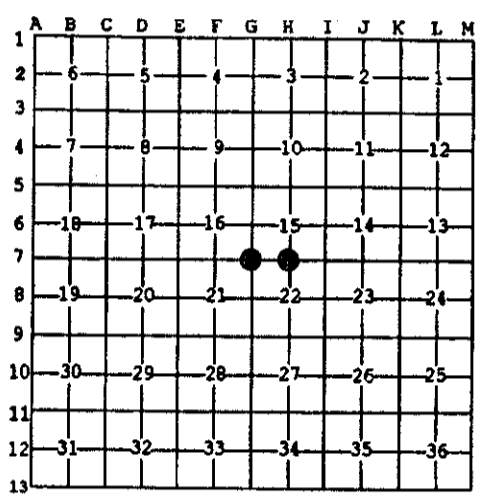
B. Description of corner evidence found and/or method applied in restoring or reestablishing corner:

(H7) The original post and accessories were not recovered. Reestablished the corner by single proportionate measurement to the original record, on line between Section corners 2654.44' east and west.
 (G7) Recovered the 1959 monument in good condition and at record bearing and distance from the 1959 witnesses recovered as follows: 28" W.Pine NW in good condition with overgrown blazes; W.Pine SE, a stump; 15" W.Pine SW dead with scribing visible. Left the monument in place and made new witnesses.

C. Description of monument for corner and accessories established to perpetuate locating the position of the corner:

(H7) Set 1" IDx32" I.pipe with 4" alum. MDNR cap. Blazed, scribed, and set measuring nails in:	(G7) Found 1" ID I.pipe with 4" brass MI Dept. of Conservation cap. Blazed, scribed, and set meas. nails in:
12" Maple N30E 35.7' "1/4S NBT"	15" dbl W.Pine S38W 18.2' "S21 NBT"
11" Maple N88E 23.4' do	12" Maple N82E 25.3' "S15 NBT"
11" Sugar S48W 13.0' do	14" Maple S45E 52.5' "S22 NBT"
12" Y.Birch N40W 13.4' do	28" W.Pine N06W 22.0' old blazes *
Set sq'd cedar post adjacent. Bearings are magnetic. Distances are to nail with tag.	Set sq'd cedar post adjacent. Bearings are magnetic. Distances are to nail with tag. * denotes 1959 NBT.

Register of Deeds Stamp & File Number



Signed by Stephan J. Szyszkoski
 Surveyor's Michigan License No. 33986

Date 9/2/04

For the Michigan Department of Natural Resources, Office of Land and Facilities