

STATE OF MICHIGAN  
DEPARTMENT  
OF  
NATURAL RESOURCES

LAND CORNER RECORD

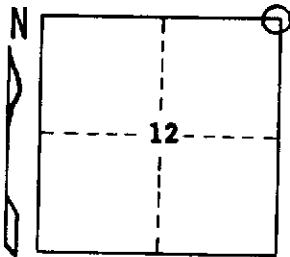
Houghton COUNTY  
T 51N R 35-36W

DESCRIPTION OF CORNER Section Corner 1, 6, 7, and 12

CORNER MONUMENT 1" I.D. x 36" iron pipe with 4" aluminum cap.

DATE MONUMENT PLACED AND WITNESSED October 5, 1970

WITNESSES TO CORNER..... Cedar 9 N16°W (mag.) 44.0 ft. "S 1, NBT"



Cedar 9 N52°E (mag.) 35.0 ft. "S 6, NBT"

Cedar 5 S34°W (mag.) 30.4 ft. "S12, NBT"

AND

CIRCLE CORNER REGISTERED

DESCRIPTION IN DETAIL AS TO HOW CORNER WAS LOCATED AND IDENTIFIED OR RESTORED.

Corner located from a Birch 12 original BT, found down and badly rotted, but with axe notch on lower blaze and overgrown upper face plainly visible. No scribe marks. Cedar line tree is down, but overgrown axe notches are evident. Distance east and north to stream crossings check very well. Corner found by survey crew while doing partial retracement of township. Blazed lines to N, S, E, and W originate from corner vicinity.

SURVEYOR'S SEAL

DISTRIBUTION:

SIGNED

Arthur O. Enger  
REGISTERED LAND SURVEYOR

DATE

March 22, 1972

Arthur O. Enger

County Courthouse  
Area Forester (Regions I & II)  
District or Region Surveyor  
Forestry Div., Lansing

R 4047  
Rev. 10/68