

STATE OF MICHIGAN
DEPARTMENT
OF
NATURAL RESOURCES

LAND CORNER RECORD

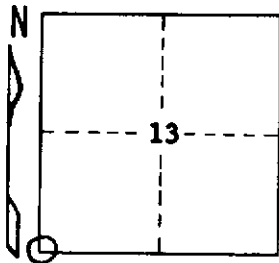
Houghton COUNTY
T 51N R 36W

DESCRIPTION OF CORNER Section Corner 13, 14, 23, and 24

CORNER MONUMENT 1" I.D. x 14" iron pipe with 4" aluminum cap.

DATE MONUMENT PLACED AND WITNESSED November 9, 1970

WITNESSES TO CORNER..... Buckler's NBT's: Elm 9 N2°E 59 lks. "NBT"



Sugar Maple 12 S2°E 62 lks. "NBT"

U.S.C. & G.S. BM N62°W 95 lks.

AND

Additional NBT: Sugar Maple 16 S50°W 54.7 ft. "S23, NBT"

CIRCLE CORNER REGISTERED

DESCRIPTION IN DETAIL AS TO HOW CORNER WAS LOCATED AND IDENTIFIED OR RESTORED.

Found a 3/8" x 24" reinforcing rod at corner re-established by proportional measurements by B. D. Buckler, R.L.S. on 9/19/62. Original post or its accessories not found at that time. Corner lies in approximate centerline of Pike Lake Road.

SURVEYOR'S SEAL

DISTRIBUTION:

SIGNED

Arthur O. Enger
REGISTERED LAND SURVEYOR
Arthur O. Enger

DATE

March 22, 1972

County Courthouse
Area Forester (Regions I & II)
District or Region Surveyor
Forestry Div., Lansing

R 4047
Rev. 10/68