

STATE OF MICHIGAN  
DEPARTMENT  
OF  
NATURAL RESOURCES

LAND CORNER RECORD

Houghton COUNTY

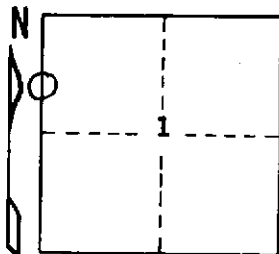
T 51N R 36W

DESCRIPTION OF CORNER North 1/16 corner between Sections 1 and 2

CORNER MONUMENT 1" I.D. x 36" iron pipe with 4" aluminum cap

DATE MONUMENT PLACED AND WITNESSED July 8, 1971

WITNESSES TO CORNER..... Sugar Maple 10 N28°E (mag.) 12.1 ft. "1/16S, BT"



Sugar Maple 5 S47°E (mag.) 17.5 ft. "1/16S, BT"

AND

CIRCLE CORNER REGISTERED

DESCRIPTION IN DETAIL AS TO HOW CORNER WAS LOCATED AND IDENTIFIED OR RESTORED.

Corner established proportionately on line between original 1/4 corner 19.531 ch. S and original section corner 20.996 ch. N. Found old N & S line blazes N and S of corner. No evidence that the corner had been established previously.

SURVEYOR'S SEAL

DISTRIBUTION:

SIGNED

*Arthur O. Enger*  
REGISTERED LAND SURVEYOR  
Arthur O. Enger

DATE

March 28, 1972

County Courthouse  
Area Forester (Regions I & II)  
District or Region Surveyor  
Forestry Div., Lansing

R 4047  
Rev. 10/68