

MICHIGAN
DEPARTMENT OF CONSERVATION
FORESTRY DIVISION

LAND CORNER RECORD

T. 51 N.R. 36 W

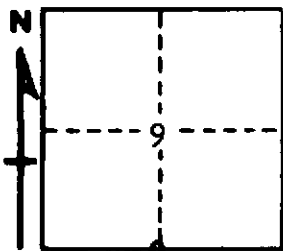
Houghton COUNTY

DESCRIPTION OF CORNER 1/4 Corner between Secs. 9-16

CORNER MONUMENT 1" Pipe with 4" Aluminum Cap

DATE MONUMENT PLACED AND WITNESSED 7/21/1966

WITNESSES TO CORNER..... 8" Soft Maple (1/4S NBT), West 51 1/2 Lks.)



8" Soft Maple (1/4S NBT), S 72° E, 41 Lks.

AND

CIRCLE CORNER REGISTERED

DESCRIPTION IN DETAIL AS TO HOW CORNER WAS LOCATED AND IDENTIFIED OR RESTORED.

Corner replaced at a 1" Iron Pipe placed by unknown Surveyor

Corner is in an old fence line and North edge of an old clearing to the West.

Found no Original evidence. Distance West to the Section Corner is 39.70 chains.

SURVEYOR'S SEAL

SIGNED *Billy D. Buckler*
Billy D. Buckler
REGISTERED LAND SURVEYOR

DATE 8/12/1966