

LAND CORNER RECORDATION CERTIFICATE
Filing Requirement of Act 74, Mich. P.A. 1970

For corners in
Houghton
 County

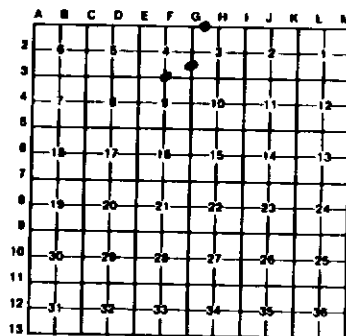
Located In:

Corner Code #:

1. Public Land Survey	T <u>51N</u> _____	R <u>FS4W</u> _____	Corner Code # <u>F3</u>
	T _____	R _____	
	T _____	R _____	
	T _____	R _____	
2. Property Controlling in Section	S <u>1</u> _____	T _____	<u>18, 1</u>
	S _____	T _____	
3. Miscellaneous Property in Sec.	S _____	T _____	
	S _____	T _____	

Register of Deeds Stamp & File Number

4. Lot No. _____, Recorded Plat _____
 5. Private Claims _____



I, Keith L. Seckitt, in a field survey on December 15, 19 87, do hereby certify that under requirements of P.A. 74, Michigan P.A. of 1970, the corner points mentioned in lines 1 and 2 above were in conformance with regulations and rules therefore as required in the current manual of survey instructions of the United States Department of the Interior, Bureau of Land Management or by a decree of a Court of Law and/or that the corner points mentioned in lines 3, 4 and 5 above were in conformance with the rules of the Michigan Board of Land Surveyors or by a Decree of a Court of Law; established, re-established, monumented, re-monumented, recovered, found as expressed below:

NOTE: Not more than 4 corners, all in the same town and range, may be recorded on this certificate.

A. Description of original monument and accessories and/or subsequent restoration:

F3	10	1
Original monument and accessories not found. Found pipe believed to have been set by Melvin Larsen many years ago, possibly from original bearing tree. Pipe fits good with swamp edge west.	Not set on original survey nor subsequently, apparently.	Found 1" iron rod recorded by Billy D. Duckler.

B. Description of corner evidence found and/or method applied in restoring or reestablishing corner:

F3	10	1
Restored at pipe.	Established midway between section corner south and 1/4 corner north on line between header corners N & S.	Restored at 1" iron rod.

C. Description of monument for corner and accessories established to perpetuate locating the position of the corner:

F3	10	1
Set 1" I.D. by 32" I.P. w/4" aluminum cap.	Set 1" I.D. by 32" I.P. w/4" aluminum cap.	1" iron rod.
5" maple 830W 12.1ft. 1/48, NBT	10" W. Pine 802E 35.1ft. 1/168, BT	8" maple N23E 14.4ft. 1/168, BT
6" maple N44W 19.3ft. 1/48, NBT	10" Hemlock 824E 31.1ft. NC, NBT	12" W. Pine N27W 44.6ft. 1/168, BT
5" sugar N30E 29.0ft. 1/48, NBT	4" Balsam 830W 3.9ft. 1/168, BT	7" maple 833E 19.6ft. 1/168, BT



Signed by Keith L. Seckitt

Date 12-15-87

Surveyor's Michigan License No. _____

19006