

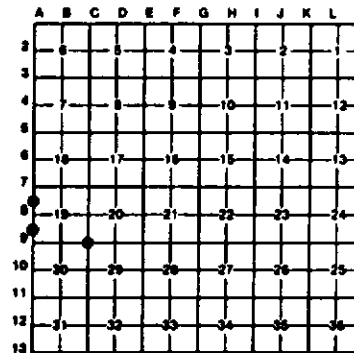
**LAND CORNER RECORDATION CERTIFICATE**  
**Filing Requirement of Act 74, Mich. P.A. 1970**

For corners in  
HOUGHTON  
(County)

	Located In:	Corner Code -#
1. Public Land Survey	T <u>51N</u> R <u>36W</u>	<u>C9</u>
	T _____ R _____	_____
	T _____ R _____	_____
	T _____ R _____	_____
2. Property Controlling in Section	S <u>19</u> T <u>51N</u> R <u>36W</u>	<u>3</u>
	S <u>19</u> T <u>51N</u> R <u>36W</u>	<u>10</u>
3. Miscellaneous Property in Sec.	S _____ T _____ R _____	_____
	S _____ T _____ R _____	_____

Register of Deeds Stamp & File Number

4. Lot No. \_\_\_\_\_, Recorded Plat \_\_\_\_\_  
 5. Private Claims \_\_\_\_\_



I, Stephan J. Szyzkoski, in a field survey on July 07, 1992, 19\_\_\_\_\_, do hereby certify that under requirements of P.A. 74, Michigan P.A. of 1970, the corner points mentioned in lines 1 and 2 above were in conformance with regulations and rules therefore as required in the current manual of survey instructions of the United States Department of the Interior, Bureau of Land Management or by a decree of a Court of Law and/or that the corner points mentioned in lines 3, 4 and 5 above were in conformance with the rules of the Michigan Board of Land Surveyors or by a Decree of a Court of Law, established, re-established, monumented, re-monumented, recovered, found as expressed below:

NOTE: Not more than 4 corners, all in the same town and range, may be recorded on this certificate.

**A. Description of original monument and accessories and/or subsequent restoration:**

(C9) Section corner common to Sections 19-20-29-30, T51N-R36W. Corner established by U.S. Deputy Surveyor S.W. Higgins, 1848. Original bearing trees: Tamarack 6 N45W 29, Tamarack 6 S80E 17. Original notes show: 1) East 5.00 ch. Small pond in swamp 50 links south of line 1 or 2 acres; 2) East 11.00 ch. Leave swamp; 3) East 11.03 ch. W. Pine 20; 4) East 80.87 ch. Section corner; 5) South 5.5 ch. Tamarack swamp E+W; 6) South 40.00 ch. 1/4 post; 7) West 16.00 ch. Leave swamp; 8) West 79.30 ch. Section corner; 9) North 7.00 ch. Leave tamarack swamp SE+NW; 10) North 80.00 ch. Section corner. Found no subsequent record of corner.  
 (3) North 1/16 corner between Section 19, T51N-R36W and Section 24, T51N-R37W. Corner not established in original survey. Found no subsequent record.  
 (10) South 1/16 corner between Section 19, T51N-R36W and Section 24 T51N-R37W. Corner not established in original survey. Found no subsequent record.

**B. Description of corner evidence found and/or method applied in restoring or reestablishing corner:**

(C9) Original post and accessories not recovered. Restored corner in an open marsh in accord with the record as referenced above: 1) checks. Pond has apparently grown in as it is now approx. 3/4 acre in size. This was accounted for. 2) checks well. This call would not check north or south. Also, all the swamp calls noted are well defined. 3) No evidence. 4) 83.03 ch. measured to a probable original corner location. 5) Checks. 6) Checks well to an original corner. 7) Checks. 8) Checks very well to a reestablished corner. 9) Checks. 10) 77.19 ch. measured to a probable original corner location. A proportionate position for this corner would have caused a substantial conflict with the record in regard to the several well-defined land calls.  
 (3) Established corner midway and on a straight line between recorded corners A7 and A8. Found no monumentation or evidence of use at this position.  
 (10) Established corner midway and on a straight line between recorded corners A8 and A9. Found no monumentation or evidence of use at this position.

**C. Description of monument for corner and accessories established to perpetuate locating the position of the corner:**

(C9) Placed a 1"x72" iron pipe projecting 24" and capped with a 4" dia. cast aluminum NDNR tablet. Blazed and scribed the following new bearing trees: 6" Tamarack S86E 119.0' (S29 NBT) 6" Tamarack S70E 96.6' (S29 NBT) 4" Spruce S38E 125.6' (S29 NBT) Placed a 4" squared post North 1.3'	(3) Placed a 1"x36" iron pipe capped with a 4" dia. cast aluminum NDNR tablet. Blazed and scribed the following bearing trees: 8" Sugar N23E 16.7' (1/16S BT) 12" Sugar N55W 11.5' (1/16S BT) 8" Hemlock S50E 27.0' (1/16S BT) 8" Sugar S36W 34.1' (1/16S BT) Corner lies 3' NW of the NW edge of a gravel road which bears NE-SW.	(10) Placed a 1"x35" iron pipe capped with a 4" dia. cast aluminum NDNR tablet. Blazed and scribed the following bearing trees: 8" Hemlock S64E 33.8' (1/16S BT) 9" Sugar S72W 4.5' (1/16S BT) 10" Sugar N31W 12.6' (1/16S BT) 4" Hemlock N61E 16.3' (1/16S BT) Placed a 6" squared cedar post N45W 1'
---	---	---

Signed by Stephan J. Szyzkoski Date 7-14-92  
 Surveyor's Michigan License No. 33986

FORM APPROVED BY MICHIGAN STATE BOARD OF LAND SURVEYORS, JAN. 28, 1971  
 REVISED BY \_\_\_\_\_ 14, 1975  
 \_\_\_\_\_ JAN., 1983

