

LAND CORNER RECORDATION CERTIFICATE
Filing Requirement of Act 74, Mich. P.A. 1970

For corners in

Houghton	Located In:	Corner Code #
<small>(County)</small>		
1. Public Land Survey	T52N R 35W	K7
	T52N R 35W	L7
	T R	
	T R	
2. Property Controlling in Section	S T R	
	S T R	
3. Miscellaneous Property in Sec.	S T R	
	S T R	

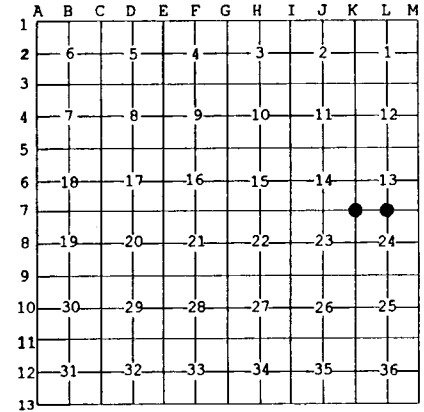
Register of Deeds Stamp & File Number

4. Lot No. _____, Recorded Plat _____
 5. Private Claims _____

Sep 25 2000

I, Stephan J. Szyszkoski, in a field survey on _____, 19____ do hereby state that under requirements of P.A. 74, Michigan P.A. of 1970, the corner points mentioned in lines 1 and 2 above were in conformance with regulations and rules therefore as required in the current manual of survey instructions of the United States Department of the Interior, Bureau of Land Management or by a decree of a Court of Law and /or that the corner points mentioned in lines 3, 4 and 5 above were in conformance with the rules of the Michigan Board of Land Surveyors or by a Decree of a Court of Law; established, re-established, monumented, recovered, found as expressed below.

NOTE: Not more than 2 corners, all in the same town and range, may be recorded on this certificate.



A. Description of original monument and accessories and/or subsequent restoration:

- (K7) Corner common to Sections 13-14-23-24. Corner reestablished and recorded in 1972 by A.O.Enger, RLS. 1" ID x 36" iron pipe with 4" aluminum cap. Cherry 4 S32W 10.7', Elm 3 N4 1/2E 31.0', Red Maple 5 N31W 31.7', W.Spruce 5 S36E 71.0'.
- (L7) Quarter corner common to Sections 13-24. Reestablished in 1972 by A.O.Enger RLS, midway and on line between section corners. 1" ID x 36" iron pipe with 4" aluminum cap. Red Maple 5 N63W 16.7', Red Maple 5 S7E 36.5'.

B. Description of corner evidence found and/or method applied in restoring or reestablishing corner:

- (K7) Found the 1972 monument, in good condition, and at record bearing and distance from the 1972 witness R.Maple NW, in good condition. Accepted the monument as a careful and faithful reestablishment of the position of the original corner.
- (L7) Found the 1972 monument, in good condition, and at record bearing and distance from the 1972 wit. Maple NW, in good condition. Accepted the monument as a careful and faithful reestablishment of the position of the original corner.

C. Description of monument for corner and accessories established to perpetuate locating the position of the corner:

- | | |
|---|---|
| (K7) Found 1" pipe with 4" aluminum cap. Blazed and scribed the following:
3" Maple N38E 7.2' "S13 NBT"
10" W.Spruce N71E 79.2' "S13 NBT"
3" Poplar S10E 10.6' "S24 NBT"
8" Maple N25W 31.0' "S14 NBT" 1972 wit.
Bearings are magnetic. Distances to notch in lower blaze. | (L7) Found 1" pipe with 4" alum. cap. Blazed and scribed the following:
8" W.Spruce N10E 24.9' "1/4S NBT"
11" W.Spruce N46.5E 43.4' do
4" Hemlock in clump N36W 43' do
8" Maple N59W 16.7' the 1972 wit.
Bearings are magnetic. Distances are to notch in lower blaze. |
|---|---|



Signed by Stephan J. Szyszkoski
 Surveyor's Michigan License No. 33986

Date 10/31/00

For the Michigan Department of Natural Resources - Forest Management Division