

LAND CORNER RECORDATION CERTIFICATE
Filing Requirement of Act 74, Mich. P.A. 1970

For corners in
Houghton
 (County)

Located In:	Corner Code #
T 52N R 35W	M9
T 52N R 35W	I8
T R	
T R	
S T R	
S T R	
S T R	
S T R	

1. Public Land Survey
2. Property Controlling in Section
3. Miscellaneous Property in Sec.

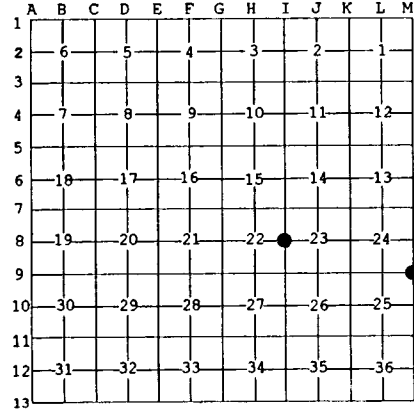
Register of Deeds Stamp & File Number

4. Lot No. _____, Recorded Plat _____
 5. Private Claims _____

I8 Sep 18 2000
 M9 Sep 13 2000

I, Stephan J. Szyszkoski, in a field survey on _____, 19____ do hereby state that under requirements of P.A. 74, Michigan P.A. of 1970, the corner points mentioned in lines 1 and 2 above were in conformance with regulations and rules therefore as required in the current manual of survey instructions of the United States Department of the Interior, Bureau of Land Management or by a decree of a Court of Law and /or that the corner points mentioned in lines 3, 4 and 5 above were in conformance with the rules of the Michigan Board of Land Surveyors or by a Decree of a Court of Law; established, re-established, monumented, recovered, found as expressed below:

NOTE: Not more than 2 corners, all in the same town and range, may be recorded on this certificate.



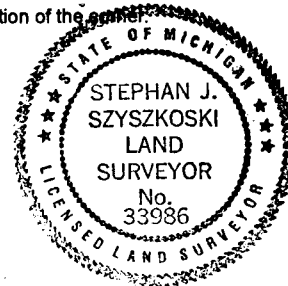
- A. Description of original monument and accessories and/or subsequent restoration:**
 (M9) Corner common to Sections 24-25 T52N-R35W and Sections 19-30 T52N-R34W. Corner monumented and recorded in 1972 by A.O. Enger, RLS. 1" IDx36" iron pipe with 4" aluminum cap. W.Spruce 8 S57E 13.5', W.Spruce 9 N 1/2 W 30.5', W.Spruce 5 S50W 54.6', W.Spruce 10 N78E 26.3'
 (I8) Quarter corner common to Sections 22-23. Corner perpetuated in the original position by Dean C. DeLaMater, RLS in 1953. 1" pipe with 4" brass cap. 14" H.Maple S75W 29 links, 12" Elm N31W 32 links.

B. Description of corner evidence found and/or method applied in restoring or reestablishing corner:

- (M9) Found the 1972 monument in good condition and at record bearing and distance from the 1972 NE and SE witnesses. Accepted same as the best available evidence of the position of the original corner.
 (I8) Found the 1953 monument, in good condition, projecting about 2 ft., at record bearing and distance from the rotting stump remains of both 1953 NBTs. Accepted same as a careful and faithful perpetuation of the position of the original corner.

C. Description of monument for corner and accessories established to perpetuate locating the position of the corner:

- | | |
|--|---|
| (M9) Found 1" pipe with 4" alum. cap.
Blazed and scribed the following:
11" W.Spruce S30E 29.6' "S30 NBT"
4" R.Maple S14W 21.1' "S25 NBT"
8" R.Maple N76W 33.6' "S24 NBT"
The 1972 wits:
9" W.Spruce N80E 26.1' dead & standing
10" W.Spruce S57E 13.5' faint scribing
Bearings are magnetic. Distances to notch in lower blaze. | (I8) Found 1" pipe with 4" brass cap.
Blazed and scribed the following:
10" Sugar N63E 17.2' "1/4S NBT"
7" W.Ash S15E 10.0' do
12" Y.Birch S53W 31.5' do
8" Y.Birch N11W 32.8' do
Bearings are magnetic. Distances are to notch in lower blaze. |
|--|---|



Signed by Stephan J. Szyszkoski
 Surveyor's Michigan License No. 33986

Date 10/31/00

For the Michigan Department of Natural Resources - Forest Management Division