

LAND CORNER RECORDATION CERTIFICATE
Filing Requirement of Act 74, Mich. P.A. 1970

For corners in

<u>Houghton</u> (County)	Located In:	Corner Code #
1. Public Land Survey	T 52N R 35W	65
	T 52N R 35W	17
	T ___ R ___	___
	T ___ R ___	___
2. Property Controlling in Section	S ___ T ___ R ___	___
	S ___ T ___ R ___	___
3. Miscellaneous Property in Sec.	S ___ T ___ R ___	___
	S ___ T ___ R ___	___

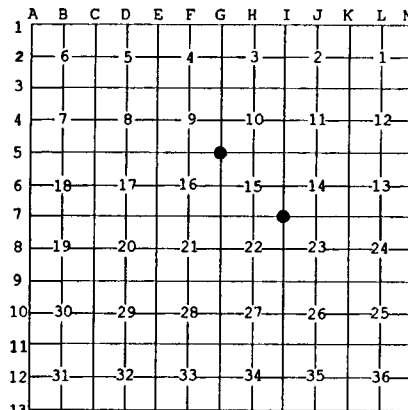
Register of Deeds Stamp & File Number

4. Lot No. _____, Recorded Plat _____
 5. Private Claims _____

17 Aug 09 1999
 65 Jul 27 1999

I, Stephan J. Szyszkoski, in a field survey on _____, 19____ do hereby state that under requirements of P.A. 74, Michigan P.A. of 1970, the corner points mentioned in lines 1 and 2 above were in conformance with regulations and rules therefore as required in the current manual of survey instructions of the United States Department of the Interior, Bureau of Land Management or by a decree of a Court of Law and/or that the corner points mentioned in lines 3, 4 and 5 above were in conformance with the rules of the Michigan Board of Land Surveyors or by a Decree of a Court of Law; established, re-established, monumented, recovered, found as expressed below:

NOTE: Not more than 2 corners, all in the same town and range, may be recorded on this certificate.

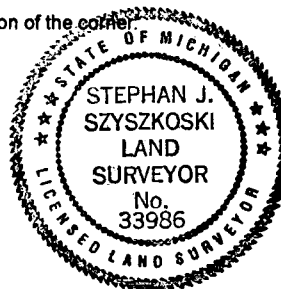


A. Description of original monument and accessories and/or subsequent restoration:
 (65) Corner common to Sections 9-10-15-16. Corner monumented from local evidence in 1953 by Dean C. DeLaMater: 1" pipe with 4" brass cap. 14" H. Maple N82E 48 links, 12" H. Maple S30W 28 links.
 (17) Corner common to Sections 14-15-22-23. Established in 1846 by S.W.Higgins: Set post...Cedar 14 S65W 23, Hemlock 16 N28E 10. Corner monumented in the original position in 1953 by Dean C. DeLaMater, RLS: 1" pipe with 4" brass cap. 10" Cedar S16W 41 links, 10" S. Maple N70E 47 links.

B. Description of corner evidence found and/or method applied in restoring or reestablishing corner:

(65) Found the 1953 monument as described, a 1" ID iron pipe capped with a 4" dia. brass Michigan Dept. of Conservation tablet, in good condition, and at record bearing and distance from the 1953 witnesses, both in good condition. Left the monument in place and marked two new witnesses as described below.
 (17) Recovered the 1953 monument as described, a 1" ID iron pipe capped with a 4" dia. cast aluminum Michigan Dept. of Conservation tablet, in good condition, and at record bearing and distance from the soft maple NBT, found with overgrown blazes. The stump of the cedar NBT was recovered at S16W 31.0' (47 lks.). The original NBT bearing trees were not recovered. Left the monument in place and marked four new accessories as described below.

C. Description of monument for corner and accessories established to perpetuate locating the position of the corner:
 (65) Found 1" pipe with 4" brass cap. Blazed and scribed the following new bearing trees:
 11" Cedar N45W 7.8' "S9 NBT"
 12" Y.Birch S43E 15.45' "S15 NBT"
 Placed a squared cedar post adjacent. Bearings are magnetic. Distances are to notch in lower blaze.
 (17) Found 1" pipe with 4" brass cap. Blazed and scribed the following:
 12" Cedar S47W 35.4' "S22 NBT"
 10" B.Ash S78W 30.4' do
 12" Maple N28E 19.3' "S14 NT"
 14" Cedar S44E 24.6' "S23 NBT"
 Placed a squared cedar post adjacent. Bearings are magnetic. Distances are to notch in lower blaze.



Signed by Stephan J. Szyszkoski Date 10/19/99
 Surveyor's Michigan License No. 33986

For the Michigan Department of Natural Resources - Forest Management Division