

LAND CORNER RECORDATION CERTIFICATE
Filing Requirement of Act 74, Mich. P.A. 1970

For corners in

<u>Houghton</u> (County)	Located in:	Corner Code #
1. Public Land Survey	T <u>52N</u> R <u>35W</u>	<u>G6</u>
	T <u>52N</u> R <u>35W</u>	<u>H7</u>
	T _____ R _____	_____
	T _____ R _____	_____
2. Property Controlling in Section	S _____ T _____ R _____	_____
	S _____ T _____ R _____	_____
3. Miscellaneous Property in Sec.	S _____ T _____ R _____	_____
	S _____ T _____ R _____	_____

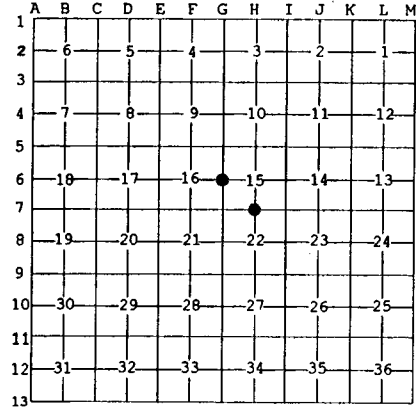
Register of Deeds Stamp & File Number

4. Lot No. _____, Recorded Plat _____
 5. Private Claims _____

H7 Aug 04 1999
 G6 Aug 03 1999

I, Stephan J. Szyszkoski, in a field survey on _____, 19____ do hereby state that under requirements of P.A. 74, Michigan P.A. of 1970, the corner points mentioned in lines 1 and 2 above were in conformance with regulations and rules therefore as required in the current manual of survey instructions of the United States Department of the Interior, Bureau of Land Management or by a decree of a Court of Law and for that the corner points mentioned in lines 3, 4 and 5 above were in conformance with the rules of the Michigan Board of Land Surveyors or by a Decree of a Court of Law; established, re-established, monumented, recovered, found as expressed below:

NOTE: Not more than 2 corners, all in the same town and range, may be recorded on this certificate.



- A. Description of original monument and accessories and/or subsequent restoration:
 (G6) Quarter corner common to Sections 15-16. Corner established in 1846 by S.W.Higgins: Set 1/4 Sec. post. Y.Birch 14 N48E 16, Sugar 14 S45W 17. Corner re-monumented in the original position in 1953 by Dean C. DeLaMater, RLS: 1" pipe with 4" brass cap. 24" H. Maple S35E 25 links, 24" Hemlock West 42 links.
 (H7) Quarter corner common to Sections 15-22. Corner re-monumented in the original position by Dean C. DeLaMater in 1953. 1" pipe with 4" brass cap. 12" Y. Birch S53W 21 links, 12" Hemlock N65E 77 links.

- B. Description of corner evidence found and/or method applied in restoring or reestablishing corner:
 (G6) Recovered the 1953 monument as described, a 1" ID iron pipe capped with a 4" dia. brass Michigan Dept. of Conservation tablet, in good condition, and at record bearing and distance from the remains of the original Y.Birch bearing tree, now a rotting stump. The monument was recovered at record bearing and distance from the remains of the 1953 witnesses. The maple has rotted completely away with only root holes visible. The hemlock is a rotting stump. Left the monument in place and marked 4 new accessories as described below.
 (H7) Recovered the 1953 monument as described, a 1" ID iron pipe capped with a 4" dia. brass Michigan Dept. of Conservation tablet, in good condition, and at record bearing and distance from the remains of the 1953 witnesses. The Y.Birch is dead and down. The Hemlock is now a 20" dia. cut stump with part of lower blaze visible. Left the monument in place and marked four new accessories as described below.

- C. Description of monument for corner and accessories established to perpetuate locating the position of the corner:
 (G6) Found 1" pipe with 4" brass cap. Blazed and scribed the following:
 7" Sugar N45E 14.1' "1/4S NBT"
 9" Sugar S11E 15.2' do
 13" Hemlock S79W 27.8' do
 10" Y.Birch N43W 34.7' do
 Placed a squared cedar post adjacent. Bearings are magnetic. Distances are to notch in lower blaze.
 (H7) Found 1" pipe with 4" brass cap. Blazed and scribed the following:
 7" Maple N40W 6.35' "1/4S NBT"
 7" Balsam S59W 17.15' do
 8" Y.Birch S08E 13.15' do
 9" Maple S83E 17.7' do
 Placed a squared cedar post adjacent. Bearings are magnetic. Distances are to notch in lower blaze.



Signed by Stephan J. Szyszkoski Date 10/19/99
 Surveyor's Michigan License No. 33986