

**LAND CORNER RECORDATION CERTIFICATE**  
**Filing Requirement of Act 74, Mich. P.A. 1970**

For corners in

<u>Houghton</u> (County)	Located In:	Corner Code #
1. Public Land Survey	T. <u>52N</u> R. <u>35W</u>	<u>I5</u>
	T. <u>52N</u> R. <u>35W</u>	<u>E6</u>
	T. <u>    </u> R. <u>    </u>	<u>    </u>
	T. <u>    </u> R. <u>    </u>	<u>    </u>
2. Property Controlling in Section	S. <u>    </u> T. <u>    </u> R. <u>    </u>	<u>    </u>
	S. <u>    </u> T. <u>    </u> R. <u>    </u>	<u>    </u>
3. Miscellaneous Property in Sec.	S. <u>    </u> T. <u>    </u> R. <u>    </u>	<u>    </u>
	S. <u>    </u> T. <u>    </u> R. <u>    </u>	<u>    </u>

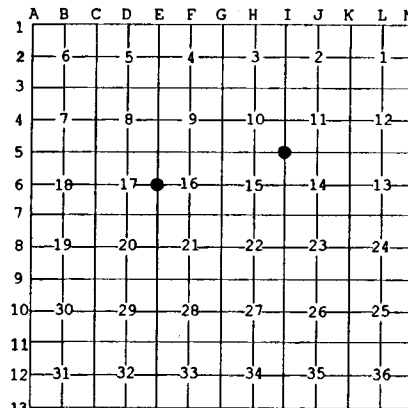
Register of Deeds Stamp & File Number

4. Lot No. \_\_\_\_\_, Recorded Plat \_\_\_\_\_  
 5. Private Claims \_\_\_\_\_

Jul 19 1999

I, Stephan J. Szyszkoski, in a field survey on \_\_\_\_\_, 19\_\_\_\_ do hereby state that under requirements of P.A. 74, Michigan P.A. of 1970, the corner points mentioned in lines 1 and 2 above were in conformance with regulations and rules therefore as required in the current manual of survey instructions of the United States Department of the Interior, Bureau of Land Management or by a decree of a Court of Law and/or that the corner points mentioned in lines 3, 4 and 5 above were in conformance with the rules of the Michigan Board of Land Surveyors or by a Decree of a Court of Law; established, re-established, monumented, recovered, found as expressed below.

NOTE: Not more than 2 corners, all in the same town and range, may be recorded on this certificate.



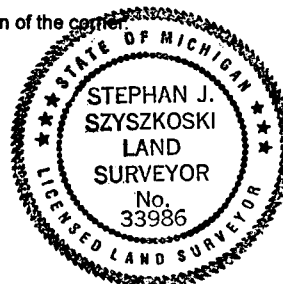
- A. Description of original monument and accessories and/or subsequent restoration:
- (I5) Corner common to Sections 10-11-14-15. Corner established in 1846 by S.W. Higgins. Original BT's: Maple 12 N80E 19, Y. Birch 10 S78W 36. Original corner position was perpetuated in 1953 by Dean C. DeLaMater, RLS. 1" pipe with 4" brass cap. 12" Cedar S30E 46 links, 12" Hemlock N55W 30 links. Found no subsequent record.
  - (E6) Quarter corner common to Sections 16-17. Established in 1846 by S.W. Higgins. Original BT's: Y. Birch 9 N82E 23, Sugar 8 S31W 22. Original corner position perpetuated in 1953 by Dean C. DeLaMater, RLS: 1" pipe with 4" brass cap. 8" H. Maple N64E 25 links, 16" H. Maple S34E 37 links.

B. Description of corner evidence found and/or method applied in restoring or reestablishing corner:

- (I5) Recovered the 1953 monument as described, a 1" ID iron pipe capped with a 4" brass Michigan Dept. of Conservation tablet, in good condition, and at record bearing and distance from the two 1953 accessories. The Cedar is now 15" dia., in good condition, S27E 30.2', with a single overgrown blaze. The hemlock is a rotting stump. The original Y. Birch BT was also recovered at record bearing and distance. It is now a 4' tall somewhat solid stump, 21" dia., with a rotted center. It was cut down a number of years ago. Found evidence of old blaze but no scribing visible. Left the corner monument in place and made three new witnesses as described below.
- (E6) Recovered the 1953 monument as described, a 1" ID iron pipe capped with a 4" brass Michigan Dept. of Conservation tablet, in good condition, and at record bearing and distance from the ground level remains of the original BT Y. Birch N82E. The monument is also at record bearing and distance from the 1953 accessories: 13" Sugar N68E 16.2' with two overgrown blazes and two metal tags, 23" Sugar stump S26E 24.2' with possible lower blaze visible. Left the monument in place and marked 3 new bearing trees as described below.

C. Description of monument for corner and accessories established to perpetuate locating the position of the corner:

- |  |   |
|--|---|
| (I5) Found 1" pipe with 4" brass cap.<br>Blazed and scribed the following:<br>4" Cedar N20E 33.4' "S11 NBT"<br>11" Y. Birch S83E 29.8' "S14 NBT"<br>12" Hemlock S66W 31.2' "S15 NBT"<br>Placed a squared cedar post adjacent.<br>Bearings are magnetic. Distances to notch in lower blaze. | (E6) Found 1" pipe with 4" brass cap.<br>Blazed and scribed the following:<br>17" Y. Birch N20E 47.6' (slope) 1/4S NBT"<br>12" Hemlock S21W 19.0' do<br>9" Y. Birch N89W 28.0' do<br>Placed a squared oak post adjacent.<br>Bearings are magnetic. Distances to notch in lower blaze. |
|--|---|



Signed by Stephan J. Szyszkoski Date 10/19/99  
 Surveyor's Michigan License No. 33986

For the Michigan Department of Natural Resources - Forest Management Division