

STATE OF MICHIGAN
DEPARTMENT
OF
NATURAL RESOURCES

LAND CORNER RECORD

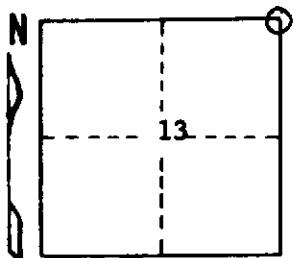
Houghton COUNTY
T 52N R 34-35W

DESCRIPTION OF CORNER Section Corner 7, 12, 13, and 18

CORNER MONUMENT 1" I.D. x 18" iron pipe with 4" aluminum cap

DATE MONUMENT PLACED AND WITNESSED May 23, 1972

WITNESSES TO CORNER..... Nail in power pole S33°W (mag.) 56.5 ft.



W. Pine 10 N23°E (mag.) ~~N23°E (mag.)~~ 87.6 ft. "S7, NBT"

AND

CIRCLE CORNER REGISTERED

DESCRIPTION IN DETAIL AS TO HOW CORNER WAS LOCATED AND IDENTIFIED OR RESTORED.

Corner re-established at approximate intersection of centerlines of an E & W county road and a N & S county road, and approximately in line with an old fence and field edge to north, which is assumed to be the described corner by common report. Measurements southward along the township line tend to support the location.

SURVEYOR'S SEAL

DISTRIBUTION:

Forestry Division, Lansing

Area Forester

District Surveyor

SIGNED

Arthur O. Enger
REGISTERED LAND SURVEYOR

DATE September 15, 1972