

LAND CORNER RECORDATION CERTIFICATE
Filing Requirement of Act 74, Mich. P.A. 1970

For corners in

<u>Houghton</u> (County)	Located in:	Corner Code #
1. Public Land Survey	T <u>52N</u> R <u>36W</u>	<u>J11</u>
	T _____ R _____	_____
	T _____ R _____	_____
	T _____ R _____	_____
2. Property Controlling in Section	S <u>27</u> T <u>52N</u> R <u>36W</u>	<u>10</u>
	S _____ T _____ R _____	_____
3. Miscellaneous Property in Sec.	S _____ T _____ R _____	_____
	S _____ T _____ R _____	_____

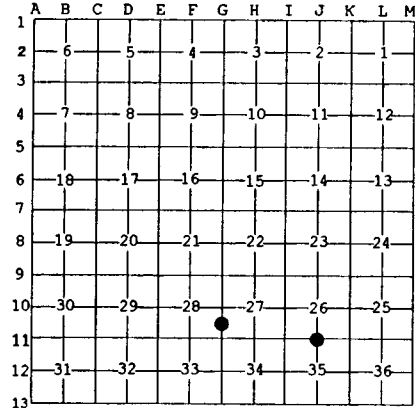
Register of Deeds Stamp & File Number

4. Lot No. _____, Recorded Plat _____
 5. Private Claims _____

J11 Dec 08 1999
 10 Nov 18 1999

I, Stephan J. Szyszkoski, in a field survey on _____, 19____ do hereby state that under requirements of P.A. 74, Michigan P.A. of 1970, the corner points mentioned in lines 1 and 2 above were in conformance with regulations and rules therefore as required in the current manual of survey instructions of the United States Department of the Interior, Bureau of Land Management or by a decree of a Court of Law and/or that the corner points mentioned in lines 3, 4 and 5 above were in conformance with the rules of the Michigan Board of Land Surveyors or by a Decree of a Court of Law; established, re-established, monumented, recovered, found as expressed below:

NOTE: Not more than 2 corners, all in the same town and range, may be recorded on this certificate.



A. Description of original monument and accessories and/or subsequent restoration:
 (J11) Quarter corner common to Sections 26-35. Established in 1846 by Sylvester Higgins: " West Corrected between Sec 26&35...40.00 Set 1/4 Sec. post Y.Birch 8 S45E 4, Y.Birch 12 N60W 24 ... 80.00 sec. corner". The Higgins' random line notes east between 26 & 35 show: "...43.00 Stream 1L W".
 (10-Sec. 27) South 1/16 corner between Sections 27 & 28. Corner not established in the original survey. Found no subsequent record.

B. Description of corner evidence found and/or method applied in restoring or reestablishing corner:

(J11) The original post and accessories were not recovered. Found no evidence of prior monumentation at the corner position. I believe the original corner lost and reestablish the corner midway and on a line of mean true bearing between monumented and recorded section corners 2667.93' easterly and westerly. At the position for the corner I placed a 1" IDx32" iron pipe capped with a 4" dia. cast aluminum MDNR tablet, appropriately stamped. The stream, noted in the record is about 2 chains east of this position. This difference with the record is consistent with other observations I have made in this township regarding GLO feature calls.
 (10-Sec. 27) Found no corner monument at this position. Established the corner midway and on a straight line between monumented Section corner 1225.36' South and monumented Quarter corner 1225.36' North. This position falls directly upon the E-W centerline, produced, of now abandoned County Road E.R-83. At the position for the corner I placed a 1" ID x 32" iron pipe capped with a 4" dia. cast aluminum MDNR tablet, appropriately stamped.

C. Description of monument for corner and accessories established to perpetuate locating the position of the corner:

(J11) Set 1" pipe with 4" MDNR cap. Blazed and scribed the following:	(10) Set 1" pipe with 4" MDNR cap. Blazed and scribed the following:
7" Hemlock N50E 32.2' "1/4S NBT"	12" Maple S53E 29.9' "1/16S BT"
10" Maple S87E 19.2' do	9" Cedar S16W 41.9' (slope dist.) do
18" Hemlock S72W 17.3' do	8" Maple S84W 18.8' do
17" Y.Birch West 54.7' do	6" twin Maple N33W 45.0' do
Placed squared spruce post adjacent.	Placed squared cedar post adjacent.
Bearings are magnetic. Distances are to notch in lower blaze.	Bearings are magnetic. Distances are to notch in lower blaze.



Signed by Stephan J. Szyszkoski Date 5/11/00
 Surveyor's Michigan License No. 33986

For the Michigan Department of Natural Resources - Forest Management Division