

**LAND CORNER RECORDATION CERTIFICATE**  
**Filing Requirement of Act 74, Mich. P.A. 1970 as Amended**

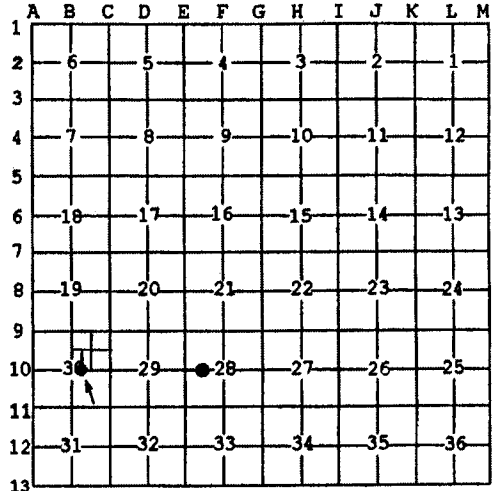
For corners in

<u>Houghton</u> (County)	Located In:	Corner Code #
1. Public Land Survey	T ___ R ___	_____
	T ___ R ___	_____
	T ___ R ___	_____
2. Property Controlling in Section	S <u>30</u> T <u>52N</u> R <u>36W</u>	<u>W-E 1/64</u>
3. Miscellaneous Property in Sec.	S <u>28</u> T <u>52N</u> R <u>36W</u>	<u>8</u>
	S ___ T ___ R ___	_____
	S ___ T ___ R ___	_____
4. Lot No. _____, Recorded Plat _____		
5. Private Claims		

**Register of Deeds Stamp & File Number**

I, Stephan J. Szyszkoski, in a field survey on Sept. 27, 2007 do hereby state that under requirements of P.A. 74, Michigan P.A. of 1970, the corner points mentioned in lines 1 and 2 above were in conformance with regulations and rules therefore as required in the current manual of survey instructions of the United States Department of the Interior, Bureau of Land Management or by a decree of a Court of Law and /or that the corner points mentioned in lines 3, 4 and 5 above were in conformance with the rules of the Michigan Board of Land Surveyors or by a Decree of a Court of Law; established, re-established, monumented, recovered, found as expressed below:

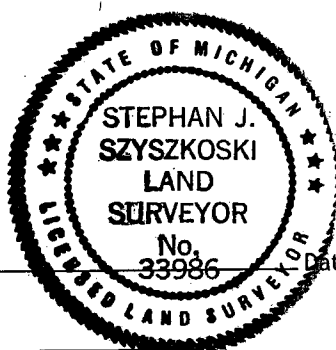
**NOTE: Not more than 2 corners, all in the same town and range, may be recorded on this certificate.**



A. Description of original monument and accessories and/or subsequent restoration:  
(W-E 1/64 - Sec. 30) The SE corner of the W1/2 of the SW1/4 of the NE1/4 of Sec. 30. Not established in the original survey.  
(8-Sec. 28) West 1/16 corner, Section 28. Not established in the original survey.

B. Description of corner evidence found and/or method applied in restoring or reestablishing corner:  
(W-E 1/64 - Sec. 30) Established the corner midway and on a straight line between Center of Section 30 651.09' west and 1/16 corner #9, 651.09' east (corner #9 not monumented in this survey).  
(8-Sec. 28) Established the corner midway and on a straight line between Quarter corner 1365.98' west and the intersection of 1/4 lines of Section 28 1365.98' east.

C. Description of monument for corner and accessories established to perpetuate locating the position of the corner:  
(1/64) Set 1"IDx32" I.pipe with 4" alum. MDNR cap. Set measuring nail with MDNR tag in the side of:  
5" Cherry N60E 16.8' mrkd "1/64S BT"  
6" Apple S56E 15.9' do  
8" Elm N89W 17.7' do  
5" Cherry N18E 23.1' do  
Set sq'd cedar post adjacent. Bearings are magnetic.  
(8) Set 1"IDx32" I.pipe with 4" alum. MDNR cap. Set measuring nail with MDNR tag in the side of:  
7" Sugar N10W 12.1' mrkd "1/16S BT"  
6" Maple in clump S84E 7.5' do  
6" Maple S22W 3.0' do  
5" Y.Birch N78W 22.3' do  
Set sq'd cedar post adjacent. Bearings magnetic.



Signed by Stephan J. Szyszkoski Date 12/17/07

Surveyor's Michigan License No. 33986