

MICHIGAN
DEPARTMENT OF CONSERVATION
FORESTRY DIVISION

LAND CORNER RECORD

T. 51 & 52 N.R. 36W

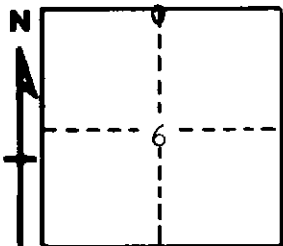
Houghton COUNTY

DESCRIPTION OF CORNER 1/4 Corner for Secs. 6-31 T52N R36W & T51N R36W

CORNER MONUMENT 1" Iron Pipe with 4" Aluminum Cap.

DATE MONUMENT PLACED AND WITNESSED 10/10/63

WITNESSES TO CORNER..... 10" Hard Maple (1/2 S NBT) N05°E 21 1/2 lks.



10" Hard Maple (1/2 S NBT) S50°E 42 lks.

AND

CIRCLE CORNER REGISTERED

DESCRIPTION IN DETAIL AS TO HOW CORNER WAS LOCATED AND IDENTIFIED OR RESTORED.

This Corner was replaced from Wood Post set by W. Knusisto 10/19/54. Noted on post B.T. was found.

SURVEYOR'S SEAL

Billy D. Buckler.
SIGNED BILLY D. BUCKLER DATE 7/30/1964
REGISTERED LAND SURVEYOR