

MICHIGAN  
DEPARTMENT OF CONSERVATION  
FORESTRY DIVISION

LAND CORNER RECORD

T. 51 252 N.R. 36W

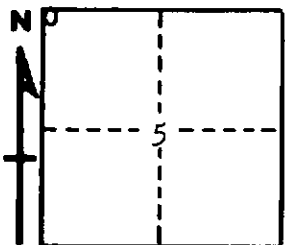
Houghton COUNTY

DESCRIPTION OF CORNER Section Corner common to Secs. 5-6 T51N R36W & 31-32 T52N R36W

CORNER MONUMENT 1" Iron Pipe

DATE MONUMENT PLACED AND WITNESSED 10/10/63

WITNESSES TO CORNER..... 11" Hard Maple (S6 MBT) S12°W 34 Lts.



9" Black Cherry (S5 MBT) S42°E 50 Lts.

21" Hard Maple (with Aluminum Tag) N49°W 18 Lts.

AND

CIRCLE CORNER REGISTERED

DESCRIPTION IN DETAIL AS TO HOW CORNER WAS LOCATED AND IDENTIFIED OR RESTORED.

This Corner was re-witnessed a 1" Iron Pipe as set by Copper Range Company. No Original Evidence.

SURVEYOR'S SEAL

SIGNED Billy D. Buckler  
BILLY D. BUCKLER  
REGISTERED LAND SURVEYOR

DATE 7/30/1964