

Nov. 6, 1998
Robert W. Crampton

LAND CORNER RECORDATION CERTIFICATE
Filing Requirement of Act 74, Mich. P.A. 1970

SURVEY &
 RE-MONUMENTATION

For corners in
HOUGHTON
 (County)

Located In:

Corner Code #

DEC 14 1998

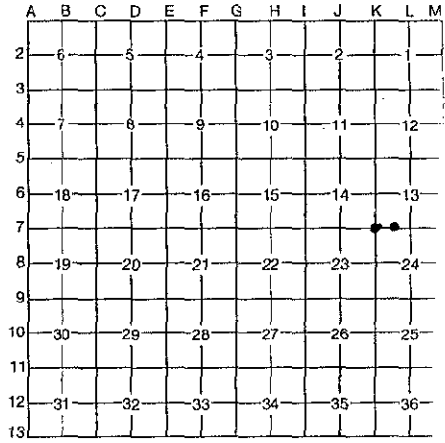
- 1. Public Land Survey T 53W R 33W
 T 53W R 33W
 T _____ R _____
 T _____ R _____
- 2. Property Controlling S _____ T _____ R _____
 in Section S _____ T _____ R _____
- 3. Miscellaneous S _____ T _____ R _____
 Property in Section S _____ T _____ R _____

K-7 Seq. # 1
MEANDER-19

SECTION

ROBERT F. MIKESCH 11/16/98
 HOUGHTON COUNTY, REGISTER 14:45
 LC 3/ 546 PAU Fee: 9.00
 Page 1 of 1

- 4. Lot No. _____, Recorded Plat _____
- 5. Private Claims _____



I, R. W. CRAMPTON, in a field survey on OCTOBER 23, 1998, do hereby certify that under requirements of P.A. 74, Michigan P.A. of 1970, the corner points mentioned in lines 1 and 2 above were in conformance with regulations and rules therefore as required in the current manual of survey instructions of the United States Department of the Interior, Bureau of Land Management or by a decree of a Court of Law and/or that the corner points mentioned in lines 3, 4 and 5 above were in conformance with the rules of the Michigan Board of Professional Surveyors or by a Decree of a Court of Law; established, re-established, monumented, re-monumented, recovered, found as expressed below:

NOTE: Not more than 4 corners, all in the same town and range, may be recorded on this certificate.

A. Description of original monument and accessories and/or subsequent restoration:

K-7, SECTION CORNER COMMON TO SECTIONS 13, 14, 23 AND 24. SET POST, FIR 7 N64W 30, Y. BIRCH 7, S40E 8.

MEANDER-19, TAMARACK 10 FOR MEANDER CORNER, SPRUCE 10, S45W 06.

B. Description of corner evidence found and/or method applied in restoring or reestablishing corner:

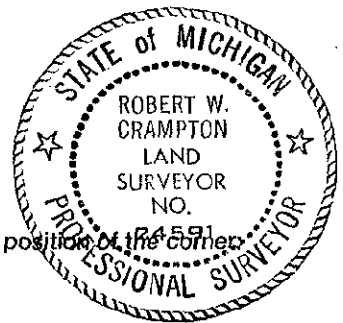
K-7, FOUND 1/2" CAPPED IRON ROD, FROM RECORDED CORNER LIBER 1, PAGE 673, NOV. 19, 1981. BY U.P. ENGINEERS & ARCHITECTS, INC. DATED 10/26/95.

MEANDER-19, FOUND 3/4" IRON PIPE IN CONCRETE 0.23' NORTH OF LINE BETWEEN SW CORNER AND SE CORNER OF SECTION 13, T53N, R33W.

C. Description of monument for corner and accessories established to perpetuate locating the position of the corner:

K-7 REPLACED WITH 1" IRON PIPE WITH 2 1/4" BRASS CAP, WITNESSES: 7" CEDAR TREE S32°E 42.48', 7" POPLAR TREE N34°W 55.39', 6" BALSAM TREE N19°E 39.87', 9" POPLAR TREE N35°E 46.88'.

MEANDER-19 LEFT 3/4" IRON PIPE IN CONCRETE AND CAPPED WITH 2 1/4" BRASS CAP, WITNESSED WITH SURVEY TAG NAILED TO: 24" W. PINE TREE N60°W 57.88', N13°W 32.70' TO SW CORNER LOG BOAT HOUSES, S22°W 63.87' TO NE CORNER FRAMED GARAGE, S41°W 76.94' TO NW CORNER FRAMED GARAGE



Signed by Robert W. Crampton
 Surveyor's Michigan License No. 24591

Date Nov. 4, 1998