

**LAND CORNER RECORDATION CERTIFICATE**  
**Filing Requirement of Act 74, Mich. P.A. 1970**

For corners in

Houghton

(County)

Located In:

Corner Code #

1. Public Land Survey	T <u>53N</u> R <u>34W</u>	<u>B7</u>
	T <u>53N</u> R <u>34W</u>	<u>C6</u>
	T _____ R _____	_____
	T _____ R _____	_____
2. Property Controlling in Section	S _____ T _____ R _____	_____
	S _____ T _____ R _____	_____
3. Miscellaneous Property in Sec.	S _____ T _____ R _____	_____
	S _____ T _____ R _____	_____

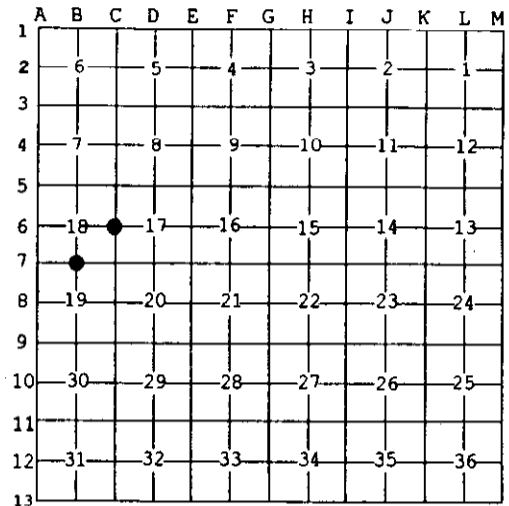
Register of Deeds Stamp & File Number

4. Lot No. \_\_\_\_\_, Recorded Plat \_\_\_\_\_  
 5. Private Claims \_\_\_\_\_

Jul 21 2003

I, Stephan J. Szyszkoski, in a field survey on \_\_\_\_\_, 20\_\_\_\_ do hereby state that under requirements of P.A. 74, Michigan P.A. of 1970, the corner points mentioned in lines 1 and 2 above were in conformance with regulations and rules therefore as required in the current manual of survey instructions of the United States Department of the Interior, Bureau of Land Management or by a decree of a Court of Law and /or that the corner points mentioned in lines 3, 4 and 5 above were in conformance with the rules of the Michigan Board of Land Surveyors or by a Decree of a Court of Law; established, re-established, monumented, recovered, found as expressed below:

NOTE: Not more than 2 corners, all in the same town and range, may be recorded on this certificate.



**A. Description of original monument and accessories and/or subsequent restoration:**

(B7) Quarter corner common to Sections 18-19. 1966: Billy D. Buckler monumented this corner at record bearing and distance from original Hemlock BT 10" s65w 19 LINKS. Set 1" pipe with 4" aluminum cap. 9" Y. Birch N53E 23.0', 7" Hard Maple S52E 13.0'.

(C6) Quarter corner common to Sections 17-18. 1966: Billy D. Buckler RLS reestablished this corner midway and on line between Section corners. 1" pipe with 4" aluminum cap. 9" Hard Maple S47E 6.8', 9" Soft Maple S50W 27.8', 6" Soft Maple N62W 27.3'.

**B. Description of corner evidence found and/or method applied in restoring or reestablishing corner:**

(B7) Found the 1966 monument in good condition and at record bearing and distance from both the 1966 witnesses and the original Hemlock BT, green, with scribing visible. The 1966 NBT SE was cut down to facilitate GPS observations for this survey. Left the monument in place and made new witnesses as described below.

(C6) Found the 1966 monument in good condition and at record bearing and distance from the 1966 witnesses. The NBT SE is now a badly rotted stump. The others are in good condition. Measurements to adjacent Section corners show that the monument is about 7 feet north of the record position, presumably the result of errors in the 1966 measurement over the difficult northerly 1/2 mile of this line. I accept the monument as a careful and faithful reestablishment of the position of the original corner.

**C. Description of monument for corner and accessories established to perpetuate locating the position of the corner:**

(B7) Found 1" ID I. pipe with 4" alum. MI Dept. of Conservation cap. Blazed, scribed, and set measuring nails in:

5" Sugar N64W 24.1' "1/4S NBT"  
 5" Sugar S70E 18.5' do

Witnesses of record:  
 27" Hemlock S70W 13.1' scribe visible  
 7" Y. Birch N55E 23.6' do

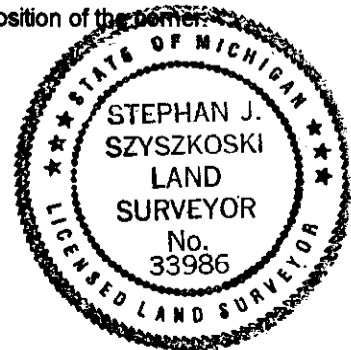
Set sq'd Cedar post adjacent. Bearings are magnetic. Distances are to nail with tag.

(C6) Found 1" ID I. pipe with 4" alum. MI Dept. of Conservation cap. Blazed, scribed, and set measuring nails in:

9" Sugar N38E 18.3' "1/4S NBT"  
 8" Maple S65E 25.9' do

The 1966 witnesses:  
 9" Maple S54W 27.8' overgrown blazes  
 8" Maple N58W 27.4' do

Set sq'd Sugar post adjacent. Bearings are magnetic. Distances are to nail with tag.



Signed by Stephan J. Szyszkoski  
 Surveyor's Michigan License No. 33986

Date 7/23/03