

LAND CORNER RECORDATION CERTIFICATE
Filing Requirement of Act 74, Mich. P.A. 1970

For corners in

Houghton

(County)

Located in:

Corner Code #

1. Public Land Survey	T	53N	R	34W	C5
	T	53N	R	34W	D5
	T		R		
	T		R		
2. Property Controlling in Section	S		T	R	
	S		T	R	
3. Miscellaneous Property in Sec.	S		T	R	
	S		T	R	

Register of Deeds Stamp & File Number

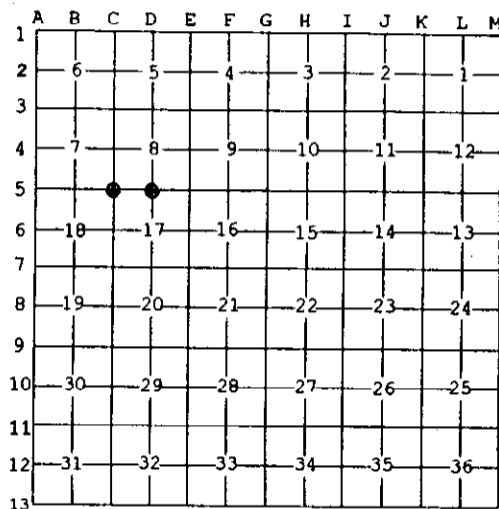
4. Lot No. _____, Recorded Plat _____

5. Private Claims _____

Jul 17 2003

I, Stephan J. Szyszkoski, in a field survey on _____, 20____ do hereby state that under requirements of P.A. 74, Michigan P.A. of 1970, the corner points mentioned in lines 1 and 2 above were in conformance with regulations and rules therefore as required in the current manual of survey instructions of the United States Department of the Interior, Bureau of Land Management or by a decree of a Court of Law and/or that the corner points mentioned in lines 3, 4 and 5 above were in conformance with the rules of the Michigan Board of Land Surveyors or by a Decree of a Court of Law; established, re-established, monumented, recovered, found as expressed below:

NOTE: Not more than 2 corners, all in the same town and range, may be recorded on this certificate.



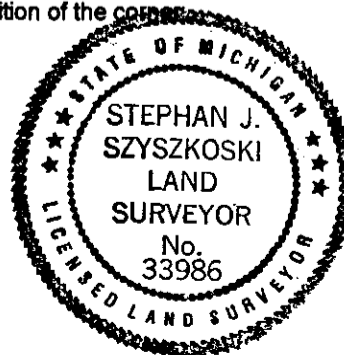
A. Description of original monument and accessories and/or subsequent restoration:
 (C5) Corner common to Sections 7-8-17-18. 1966: Billy D. Buckler RLS reestablished the corner by proportionate measurement. 1" pipe with 4" aluminum cap. 6" Y.Birch N12W 3.6', 5" Soft Maple N50E 42.0', 6" Soft Maple S15E 19.5', 6" Soft Maple S25W 48.4'.
 (D5) Quarter corner common to Sections 8-17. 1966: Billy Buckler RLS reestablished the corner "from old blazes East and West and by Proportionate Distance to a Section Corner 1.5 miles West and Fences 1/4 and 1/2 mile East. Corner lies on old RR grade bearing NW-SE". 1" iron pipe with 4" aluminum cap. 5" Soft Maple N77W 31.1', 4" Soft Maple S12W 31.8', 5" twin Soft Maple N86E 54.4'. The copy of this corner record on file at the MDNR office in Baraga has written on it in pencil "No pipe" adjacent to the description of the monument.

B. Description of corner evidence found and/or method applied in restoring or reestablishing corner:

(C5) Recovered the 1966 monument in good condition and at record bearing and distance from the 4 witness trees. The Y.Birch NBT is a standing 3' stub with overgrown blazes. All three of the Soft Maples were found in good condition though the SE'yly one was cut to facilitate GPS observations for this survey. Left the monument in place and made new witnesses as described below.
 (D5) The 1966 monument was not recovered. Found the point of a rotted wood post 5" below ground at record bearing and distance from the 1966 NBTs recovered as follows: 4" Soft Maple S12W 31.8' standing dead, 5" twin Soft Maple N86E 54.4' dead and down, 5" Maple N77W 31.1' was not recovered. The post point was found in accord with the proportion noted in the 1966 record. There is no evidence of a RR grade at this location. Accepted the location of the post point as a careful and faithful reestablishment of the position of the corner and replaced it with a monument as described below.

C. Description of monument for corner and accessories established to perpetuate locating the position of the corner:

(C5) Found 1" ID I.pipe with 4" brass MI Dept. of Conservation cap. Blazed, scribed, and set measuring nails in: 6" Sugar N85E 18.25' "S8 NBT" 8" Y.Birch N61W 31.1' "S7 NBT"	(D5) Set 1" IDx32" I.pipe with 4" alum. MDNR cap. Blazed, scribed, and set measuring nails in: 8" Maple N37E 83.6' "1/4S NBT" 6" Balsam S88W 20.3' do 8" Y.Birch S88W 19.3' do 6" Balsam N40W 24.6' do Set a sq'd Spruce post adjacent. Bearings are magnetic. Distances are to nail with tag.
---	--



Signed by Stephan J. Szyszkoski
 Surveyor's Michigan License No. 33986

Date 7/23/03