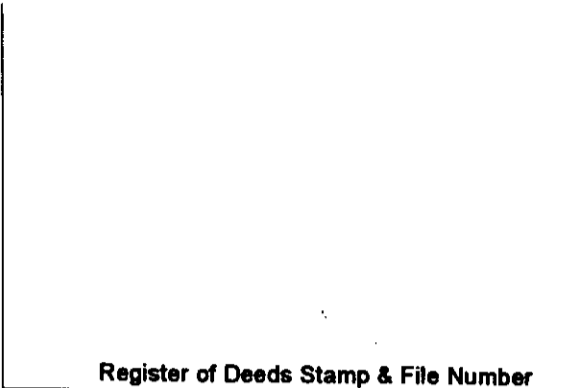


LAND CORNER RECORDATION CERTIFICATE
Filing Requirement of Act 74, Mich. P.A. 1970

For corners in

<u>Houghton</u> (County)	Located In:	Corner Code #
1. Public Land Survey	T <u>53N</u> R <u>34W</u>	<u>D4</u>
	T _____ R _____	_____
	T _____ R _____	_____
	T _____ R _____	_____
2. Property Controlling in Section	S <u>7</u> T <u>53N</u> R <u>34W</u>	<u>14</u>
	S _____ T _____ R _____	_____
3. Miscellaneous Property in Sec.	S _____ T _____ R _____	_____
	S _____ T _____ R _____	_____

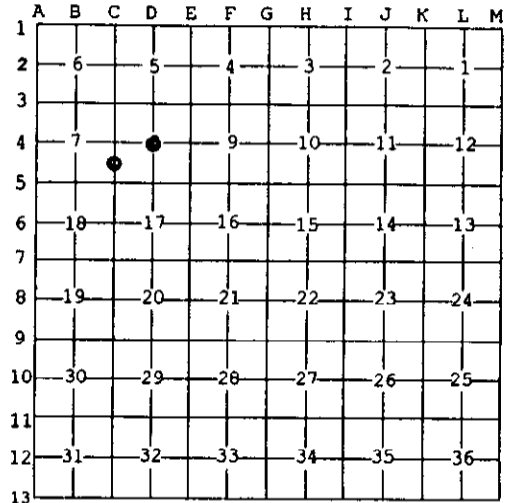


4. Lot No. _____, Recorded Plat _____
 5. Private Claims _____

Jul 10 2003

I, Stephan J. Szyszkoski, in a field survey on _____, 20____ do hereby state that under requirements of P.A. 74, Michigan P.A. of 1970, the corner points mentioned in lines 1 and 2 above were in conformance with regulations and rules therefore as required in the current manual of survey instructions of the United States Department of the Interior, Bureau of Land Management or by a decree of a Court of Law and /or that the corner points mentioned in lines 3, 4 and 5 above were in conformance with the rules of the Michigan Board of Land Surveyors or by a Decree of a Court of Law; established, re-established, monumented, recovered, found as expressed below:

NOTE: Not more than 2 corners, all in the same town and range, may be recorded on this certificate.



A. Description of original monument and accessories and/or subsequent restoration:

(D4) Center of Section 8. Not established in the original survey. 1966: Billy D. Buckler squared and scribed a 3" hard maple. 8" Y. Birch S76E 19.2', 8" Hard Maple S08E 16.5', 8" Hard Maple N54W 7.0'. The 1966 record does not describe the method used to establish this corner. No evidence was found in the notes of that survey that the 1/4 corners on the North and East lines of Sec. 8 were considered in the monumentation of this corner.

(14-Sec. 7) South 1/16 corner between Sections 7 and 8. Not established in the original survey.

B. Description of corner evidence found and/or method applied in restoring or reestablishing corner:

(D4) Found the 1966 bearing trees of record, in good condition. The 3" corner tree (or perhaps 3" wood post) was not recovered. As determined from the 1966 witnesses, the 1966 position is S65 deg. 31'W (true) 49.37' from the position subsequently monumented. I did not accept the 1966 position and established the corner at the intersection of straight lines connecting opposite 1/4 corners.

(14-Sec. 7) Established the corner midway and on a straight line between Quarter corner 1320.98' North and Section corner 1320.98' South.

C. Description of monument for corner and accessories established to perpetuate locating the position of the corner:

(D4) Set 1"IDx32" I.pipe with 4" alum. MDNR cap. Blazed, scribed, and set measuring nails in:
 8" double Sugar N77E 21.5' "C1/4 BT"
 9" Sugar S25E 13.2' do
 5" Sugar S75W 11.4' do
 6" Y.Birch N24W 6.35' do
 Set sq'd Sugar post adjacent. Bearings are magnetic. Distances are to nail with tag.

(14) Set 1"IDx32" I.pipe with 4" alum. MDNR cap. Blazed, scribed, and set measuring nails in:
 15" Oak N60E 22.0' "1/16S BT"
 9" double Sugar S32E 21.45' do
 6" double Sugar S14W 6.4' do
 7" Sugar N29W 17.9' do
 Set sq'd Sugar post adjacent. Bearings are magnetic. Distances are to nail with tag.



Signed by Stephan J. Szyszkoski
 Surveyor's Michigan License No. 33986

Date 7/23/03