

LAND CORNER RECORDATION CERTIFICATE
Filing Requirement of Act 74, Mich. P.A. 1970 as Amended

For corners in

<u>Houghton</u> (County)	Located In:	Corner Code #
1. Public Land Survey	T <u>53N</u> R <u>36W</u>	<u>K13</u>
	T _____ R _____	_____
	T _____ R _____	_____
2. Property Controlling in Section	S _____ T _____ R _____	_____
	S _____ T _____ R _____	_____
3. Miscellaneous Property in Sec.	S _____ T _____ R _____	_____
	S _____ T _____ R _____	_____

Register of Deeds Stamp & File Number

4. Lot No. _____, Recorded Plat _____
 5. Private Claims _____

Jun 14 2007

I, Stephan J. Szyszkoski, in a field survey on _____, 20____ do hereby state that under requirements of P.A. 74, Michigan P.A. of 1970, the corner points mentioned in lines 1 and 2 above were in conformance with regulations and rules therefore as required in the current manual of survey instructions of the United States Department of the Interior, Bureau of Land Management or by a decree of a Court of Law and /or that the corner points mentioned in lines 3, 4 and 5 above were in conformance with the rules of the Michigan Board of Land Surveyors or by a Decree of a Court of Law; established, re-established, monumented, recovered, found as expressed below:

NOTE: Not more than 2 corners, all in the same town and range, may be recorded on this certificate.

A. Description of original monument and accessories and/or subsequent restoration:

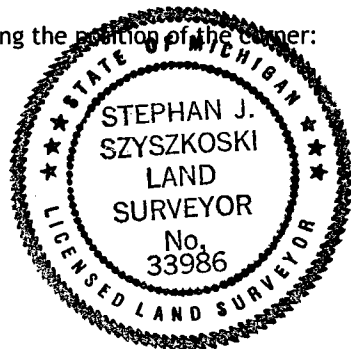
(K13) Standard Section corner between Sections 35 and 36. 1845 - Established by Austin Burt, Deputy Surveyor: Set post. Sugar 12 N07E 31 links, Birch 10 N80W 28 links. 1846 - S.W.Higgins, Deputy Surveyor noted Standard corner is 13 links west of Closing Corner to 1-2 T52N-R36W. 1944 - W.A.Waara, Copper Range Co., "Found 2" I.P. for Cor. in a flat stand of hwd. 2nd gro. Put Y. tag on 4" bir. S23E 15 ft. Put W.A.W. mark on 7" r. map. N53E 11 ft. Found another I.P. S82E 9 ft. Found 28" bir. B.T. N78W 19 ft. Found old sq. off 16" s. map. S12W 7 ft. "1964 - Billy D. Buckler RLS states: This corner was rewitnessed as found by Copper Range Co. Yellow Birch 10" N80W 28 links B.T. still growing. Faces visible. 1 1/2" iron pipe. 11" Elm N41W 61 links, 8" H.Maple S33E 32 links, 1.5" Iron Pipe S85E 13 links. Both Waara and Buckler erroneously state that the corner is common with Sections 1-2 T52N-R36W.

B. Description of corner evidence found and/or method applied in restoring or reestablishing corner:

(K13) The original post and accessories were not recovered. Found a 1.5" I.D. Iron pipe, projecting 2.7 ft. above ground in good condition, from which a second 1.5" I.D. Iron pipe at the Closing Section corner for Sections 1 and 2 T52-R36W, bears S84 1/2E (true brg.) 8.55' distant. None of the record witnesses were recovered. I accept the westerly 1.5" I.D. pipe as the best available evidence of the position of the original Standard Section corner.

C. Description of monument for corner and accessories established to perpetuate locating the position of the corner:

(K13) Fd. 1.5" I.D. I.pipe. Set measuring nails in:
 12" Sugar N06E 30.3' mrd "S36 NBT"
 11" Sugar N87E 28.4' do
 11" Y.Birch S24E 13.7' "S2 N8T"
 10" Sugar S76W 7.85' do
 Bearings are magnetic. Dist. are to nail with MDNR tag. Fd. 1.5" I.D. I.pipe S84E 8.55' at Closing Corner.



Signed by Stephan J. Szyszkoski
 Surveyor's Michigan License No. 33986

Date 7/18/07