

MICHIGAN  
DEPARTMENT OF CONSERVATION  
FORESTRY DIVISION



# LAND CORNER RECORD

T. 52 & 53 N.R. 36W

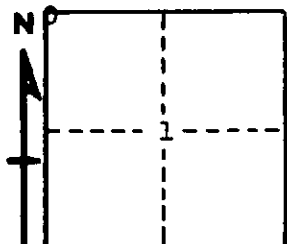
Houghton COUNTY

DESCRIPTION OF CORNER Section Corner common to Secs. 1-2 T52N R36W & Secs. 35-36 T53N R36W

CORNER MONUMENT 1 1/2" Iron Pipe

DATE MONUMENT PLACED AND WITNESSED 10/15/63

WITNESSES TO CORNER..... 11" Elm (S35 NBT) N41°W 61 lks.



8" H. Maple (S1 NBT) S33°E 32 lks.

1 1/2" Iron Pipe S85°E 13 lks.

AND

CIRCLE CORNER REGISTERED

DESCRIPTION IN DETAIL AS TO HOW CORNER WAS LOCATED AND IDENTIFIED OR RESTORED.

This Corner was re-witnessed as found by Copper Range Company. Yellow Birch 10" N80°W 28 lks. B.T. still growing. Faces visible.

SURVEYOR'S SEAL

SIGNED *Billy D. Buckler*  
BILLY D. BUCKLER  
REGISTERED LAND SURVEYOR

DATE 7/20/1964