

MICHIGAN
DEPARTMENT OF CONSERVATION
FORESTRY DIVISION

LAND CORNER RECORD

T. 52 & 53 N. R. 36W

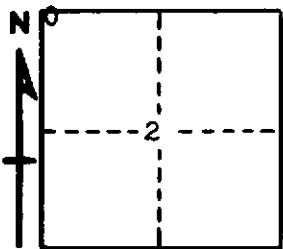
Houghton COUNTY

DESCRIPTION OF CORNER Section Corner common to Secs. 2-3 T52N R36W & Sec. 34-35 T53N R36W

CORNER MONUMENT 1 1/2" Iron Pipe

DATE MONUMENT PLACED AND WITNESSED 10/15/63

WITNESSES TO CORNER..... 10" H. Oak (S34 NBT) N30°W 28 lks.



7" H. Maple (S3 NBT) S50°W 34 lks.

1" Iron Pipe S83°W 16 lks.

AND

CIRCLE CORNER REGISTERED

DESCRIPTION IN DETAIL AS TO HOW CORNER WAS LOCATED AND IDENTIFIED OR RESTORED.

This Corner was re-witnessed 1 1/2" Iron Pipe as found by Copper Range Company.
No Original evidence.

SURVEYOR'S SEAL

SIGNED *Billy E. Buchter*
BILLY E. BUCHTER
REGISTERED LAND SURVEYOR

DATE 7/20/1964