

Ronald W. Aanta
DEC. 10, 1997

LAND CORNER RECORDATION CERTIFICATE
Filing Requirement of Act 74, Mich. P.A. 1970

JAN 09 1998

For corners in
Houghton
(County)

Located In:

Corner Code #

SECTION

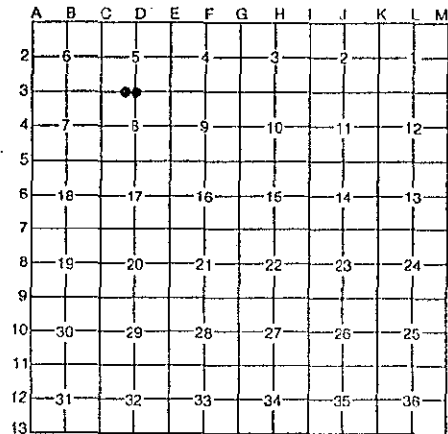
1. Public Land Survey T55N R 32W
T55N R 32W
T ___ R ___
T ___ R ___
2. Property Controlling S ___ T ___ R ___
in Section S ___ T ___ R ___
3. Miscellaneous S ___ T ___ R ___
Property in Section S ___ T ___ R ___

Z3
D-3

NANCY FENILI 12/11/97
HOUGHTON COUNTY 11:23
LC 3/ 455 PAU Fee: 9.00
Page 1 of 1

Register of Deeds Stamp & File Number

4. Lot No. _____, Recorded Plat _____
5. Private Claims _____



Ronald S. Haataja in a field survey on November, 19 97, do hereby certify that under requirements of P.A. 74, Michigan P.A. of 1970, the corner points mentioned in lines 1 and 2 above were in conformance with regulations and rules therefore as required in the current manual of survey instructions of the United States Department of the Interior, Bureau of Land Management or by a decree of a Court of Law and/or that the corner points mentioned in lines 3, 4 and 5 above were in conformance with the rules of the Michigan Board of Professional Surveyors or by a Decree of a Court of Law; established, re-established, monumented, re-monumented, recovered, found as expressed below:

NOTE: Not more than 4 corners, all in the same town and range, may be recorded on this certificate.

A. Description of original monument and accessories and/or subsequent restoration:

Corner Code (Z3) Meander Corner between Sections 5 and 8
42.86 Intersected Lake
4" Spruce Meander Corner
W. Birch 8" N57°E 271ks.

(D-3) S1/4 Corner Section 5, T55N-R32W
40.00 Set gr. Section Post
References: White Birch 6" S36°E 211ks.
Sugar 8" N75°W 151ks.

B. Description of corner evidence found and/or method applied in restoring or reestablishing corner:

Corner Code (Z3) Meander Corner between Sections 5 and 8
Found 1/2" pin with UPEA cap

(D-3) S1/4 Corner Section 5, T55N-R32W
No evidence of original survey found.
Set 3/4" I.D. Pipe at record distance from SE Corner Section 5

C. Description of monument for corner and accessories established to perpetuate locating the position of the corner:

Corner Code (Z3) Meander Corner between Sections 5 and 8
Accepted 1/2" capped pin as found corner. Drove 1" pipe
over pin and cemented brass remonumentation cap and stamped MC
Witnesses: 2" Apple N40°W 34.32', 4" Willow S71°W 33.27', 5 1997
Property Corner 1/2" rebar S07°W 13.17', 6" Poplar S25°E 8
149.24', S1/4 Corner Sec. 5 N89°53'36"E 186.71'. T55N-R32W

(D-3) S1/4 Corner Section 5, T55N-R32W
Set 3/4" I.D. Pipe and cemented brass remonumentation cap and stamped
Witnesses: Util. Pole N21°E 176.60', Util. Pole S87°E T55N-R32W
102.05', Util. Pole S54°E 203.80', 3/4" iron bolt S20°W 5 1997
10.85' Meander Corner S89°53'36"W 186.71'. 8

Signed by Ronald S. Haataja Date Nov. 25, 1997 1/4 COR.

Surveyor's Michigan License No. 39478

3-457
27

(D-5) S1/4 Cor. Section 8, T55N-R32W 3" O.D. Pipe found.
Cemented in brass remon. cap and stamped T55N-R32W

1/4 — | 8
 | 17 cor
 1997

(E-5) SE Cor. Section 8, T55N-R32W 1/2" rebar in Mon. box found.
Drove 3/4" pipe over rebar and cemented in brass remon. cap
and stamped T55N-R32W

8 | 9
17 | 16
1997

09/11

WASCO
1000
1000