

JAN 25 2000

Ronald S. Haataja  
Oct. 28, 1999

**LAND CORNER RECORDATION CERTIFICATE**  
**Filing Requirement of Act 74, Mich. P.A. 1970**

SECTION

For corners in  
Houghton  
(County)

Located In:

Corner Code #

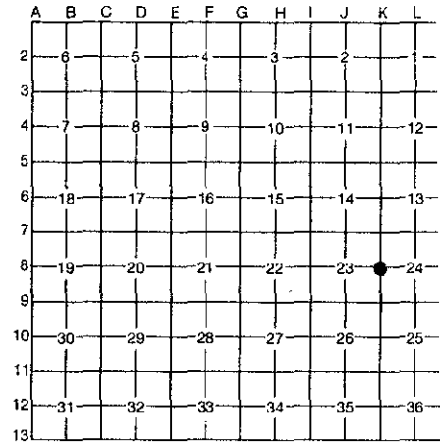
- 1. Public Land Survey T 55N R 34W  
T \_\_\_\_\_ R \_\_\_\_\_  
T \_\_\_\_\_ R \_\_\_\_\_  
T \_\_\_\_\_ R \_\_\_\_\_
- 2. Property Controlling S \_\_\_\_\_ T \_\_\_\_\_ R \_\_\_\_\_  
in Section S \_\_\_\_\_ T \_\_\_\_\_ R \_\_\_\_\_
- 3. Miscellaneous S \_\_\_\_\_ T \_\_\_\_\_ R \_\_\_\_\_  
Property in Section S \_\_\_\_\_ T \_\_\_\_\_ R \_\_\_\_\_

K-8

Mary Schoos 1P  
Register of Deeds  
Houghton County, Register  
Page 1 of 1 LC 4/61  
PAU Date 12/30/1999 Time 10:49:48  
9.077  
**Register of Deeds Stamp & File Number**

- 4. Lot No. \_\_\_\_\_, Recorded Plat \_\_\_\_\_
- 5. Private Claims \_\_\_\_\_

Ronald S. Haataja a field survey on November, 19 96, do hereby certify that under requirements of P.A. 74, Michigan P.A. of 1970, the corner points mentioned in lines 1 and 2 above were in conformance with regulations and rules therefore as required in the current manual of survey instructions of the United States Department of the Interior, Bureau of Land Management or by a decree of a Court of Law and/or that the corner points mentioned in lines 3, 4 and 5 above were in conformance with the rules of the Michigan Board of Professional Surveyors or by a Decree of a Court of Law; established, re-established, monumented, re-monumented, recovered, found as expressed below:

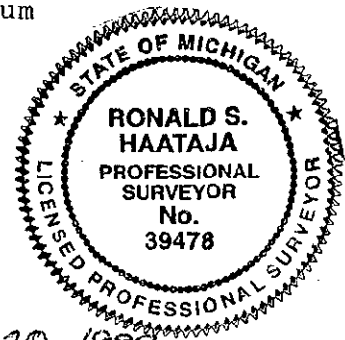


**NOTE: Not more than 4 corners, all in the same town and range, may be recorded on this certificate.**

A. Description of original monument and accessories and/or subsequent restoration:  
(K-8) East Quarter corner Section 23, T55N-R34W  
40.00 Set Quarter Section corner  
References: Sugar 12" N60°E 20 lks.  
Hemlock 14" S82°E 79 lks.

B. Description of corner evidence found and/or method applied in restoring or reestablishing corner:  
(K-8) East Quarter corner Section 23, T55N-R34W  
Found 1 1/4" Iron Pin in large boulder

C. Description of monument for corner and accessories established to perpetuate locating the position of the corner:  
(K-8) East Quarter corner Section 23, T55N-R34W  
Accepted the 1 1/4" pin as the corner. Drove 2" Aluminum pipe over pin and cemented on a Brass Houghton County Remonumentation cap  
Witnesses: Brass Tags PS#39478 in side of trees  
Power Pole N75°E 184.96'  
12" Red Pine N44°W 133.75'  
12" Red Pine S58°W 116.93'  
8" Willow in clump S49°E 76.33'



Signed by Ronald S. Haataja

Date October 20, 1999

Surveyor's Michigan License No. 39478