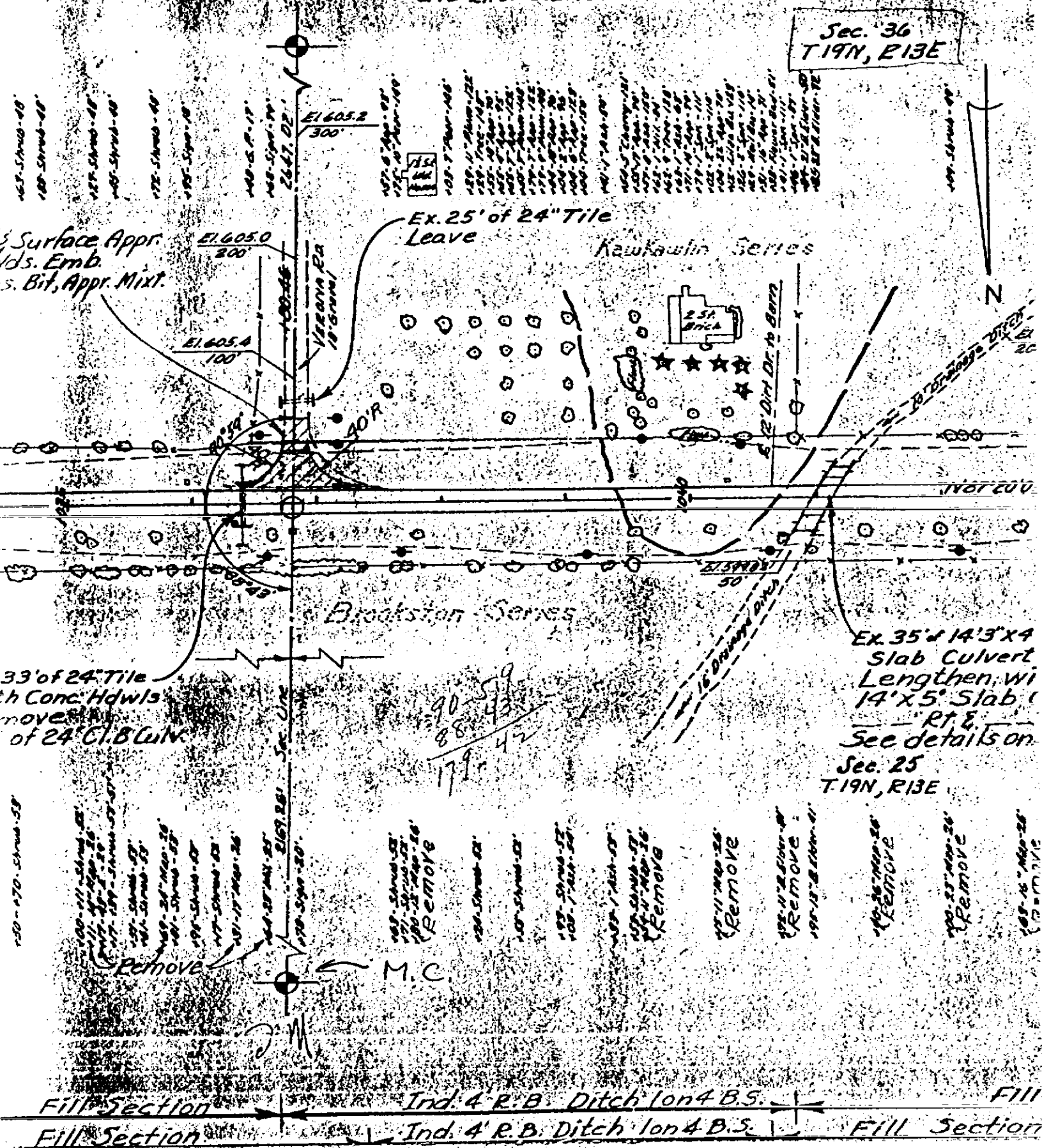


679.85  
611.78  
3.07

Witnesses to Meander Cor.  
Between Sec's 25 & 30 (3/4" pipe)  
N 04°W - 25' Elm - 54.53'  
N 05°E - 20' Elm - 54.15'  
S 05°W - 13' Oak - 30.44'

Witnesses to N.E. Sec. Cor  
Sec 36 (1/2" pipe)  
N 40°E - 23' Maple - 28.04'  
S 25°E - Tel. pole - 63.77'  
S 40°W - Flow. pole - 57.35'  
242' Rt. of Sta. 1036 + 80.46

Witnesses to E 1/4 cor.  
Sec. 36 (1/2" pipe)  
N 77°W - 15' Maple - 24.24'  
N 29°W - 9' Maple - 44.58'  
N 44°E - Tel. Pole - 47.28'



163-170 Strub-48  
164-171 Strub-48  
165-172 Strub-48  
166-173 Strub-48  
167-174 Strub-48  
168-175 Strub-48  
169-176 Strub-48  
170-177 Strub-48  
171-178 Strub-48  
172-179 Strub-48  
173-180 Strub-48  
174-181 Strub-48  
175-182 Strub-48  
176-183 Strub-48  
177-184 Strub-48  
178-185 Strub-48  
179-186 Strub-48  
180-187 Strub-48  
181-188 Strub-48  
182-189 Strub-48  
183-190 Strub-48  
184-191 Strub-48  
185-192 Strub-48  
186-193 Strub-48  
187-194 Strub-48  
188-195 Strub-48  
189-196 Strub-48  
190-197 Strub-48  
191-198 Strub-48  
192-199 Strub-48  
193-200 Strub-48

Surface Appr.  
Yds. Emb.  
5. Bit, Appr. Mixt.

33' of 24" Tile  
w/ Conc. Hdwls  
moved  
of 24" C.I. B. Culv.

190-191 Strub-53  
191-192 Strub-53  
192-193 Strub-53  
193-194 Strub-53  
194-195 Strub-53  
195-196 Strub-53  
196-197 Strub-53  
197-198 Strub-53  
198-199 Strub-53  
199-200 Strub-53  
200-201 Strub-53  
201-202 Strub-53  
202-203 Strub-53  
203-204 Strub-53  
204-205 Strub-53  
205-206 Strub-53  
206-207 Strub-53  
207-208 Strub-53  
208-209 Strub-53  
209-210 Strub-53  
210-211 Strub-53  
211-212 Strub-53  
212-213 Strub-53  
213-214 Strub-53  
214-215 Strub-53  
215-216 Strub-53  
216-217 Strub-53  
217-218 Strub-53  
218-219 Strub-53  
219-220 Strub-53

Fill Section Ind. 4' R.B. Ditch 1 on 4 B.S. Fill Section  
Fill Section Ind. 4' R.B. Ditch 1 on 4 B.S. Fill Section