

RECORDED 97907
HILLSDALE CO. MICH.
'94 DEC 14 AM 11 58

ACCEPTED BY THE HILLSDALE COUNTY SURVEY PEER GROUP AS THE OFFICIAL CORNER UNDER MICHIGAN PUBLIC ACT 348 OF 1980 AT A MEETING HELD ON 11-10-94 AL RINGENBERG, CO REC.

REMONUMENTATION
LAND CORNER RECORDATION CERTIFICATE
Filing Requirement of Act 74, Mich. P.A. 1970

For corners in

HILLSDALE (County)		Located in:	Corner Code #/
1. Public Land Survey	T 53 R 1W		C-3 C-4 C-5
	T R		
	T R		
	T R		
2. Property Controlling in Section	S T R		
	S T R		
3. Miscellaneous Property in Sec.	S T R		
	S T R		

Judy VanZandt
REG. OF DEEDS

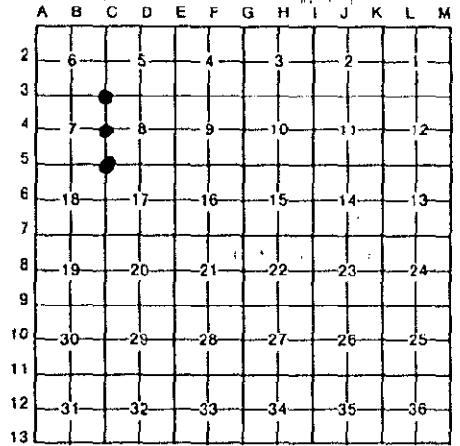
SURVEY &
REMONUMENTATION

APR 27 1995

Register of Deeds Stamp & File Number

COMMISSION

4. Lot No. _____, Recorded Plat _____
5. Private Claims _____



I, John E. Maxson, in a field survey on 4 November, 19 94, do hereby certify that under requirements of P.A. 74, Michigan P.A. of 1970, the corner points mentioned in lines 1 and 2 above were in conformance with regulations and rules therofore as required in the current manual of survey instructions of the United States Department of the Interior, Bureau of Land Management or by a decree of a Court of Law and/or that the corner points mentioned in lines 3, 4 and 5 above were in conformance with the rules of the Michigan Board of Land Surveyors or by a Decree of a Court of Law; established, re-established, monumented, re-monumented, recovered, found as expressed below:

NOTE: Not more than 4 corners, all in the same town and range, may be recorded on this certificate.

A. Description of original monument and accessories and/or subsequent restoration:

C-3 GLO, 1824, 16"B.Oak, N62W, 26 lks 7"B.Oak, S13W, 1.04 lks Co. Sur 1891, Stone 18"W.Oak, S84W, 6 lks LCRC, 1976, Ringenberg, L1, P558 Stone VanGieson Survey, 1986, L558, P848 Anchor Post	C-4 GLO, 1824, 10"B.Oak, N59W, 6 lks 6"B.Oak, S84W, 3 lks LCRC, 1976, Ringenberg, L1, P558 1/2" Iron VanGieson Survey, 1980, L1, P667 1/2" Iron	C-5 GLO, 1824, 16"B"Oak, N62W, 26 lks 7"W.Oak, S13W, 1.04 lks LCRC, 1976, Ringenberg, L1, P558 1/2" Iron
---	---	--

B. Description of corner evidence found and/or method applied in restoring or reestablishing corner:

C-3 Found stone next to fence Post from Ringenberg LCRC and accepted as the best available evidence of the position of the original Corner	C-4 Found concrete monument at fence intersection and accepted as the best available evidence of the position of the original Corner	C-5 Found iron from Ringenberg LCRC with many flat stones under it and accepted as the best available evidence of the position of the original Corner
---	---	--

C. Description of monument for corner and accessories established to perpetuate locating the position of the corner:

C-3 Reset 5/8 x 36 rebar w/cap N68W 15.16' 18"Oak N55E 21.92' 12"Oak S35E 24.96' 12"Oak S57W 32.22' 12"Oak	C-4 Reset 5/8 x 36 rebar w/cap N05E 14.63' 8"Locust N45E 41.21' 12"Cherry S60W 2.46' 6"Ash S85W 34.98' 8"Locust	C-5 Reset 5/8 x 36 rebar w/cap N84W 32.08' 40"Oak N50E 33.80' 16"Cherry S10E 21.58' 36"Oak N75E 38.48' 8"Oak
---	--	---

Signed by John E. Maxson
Surveyor's Michigan License No. 27454

Date 12 December, 1994

